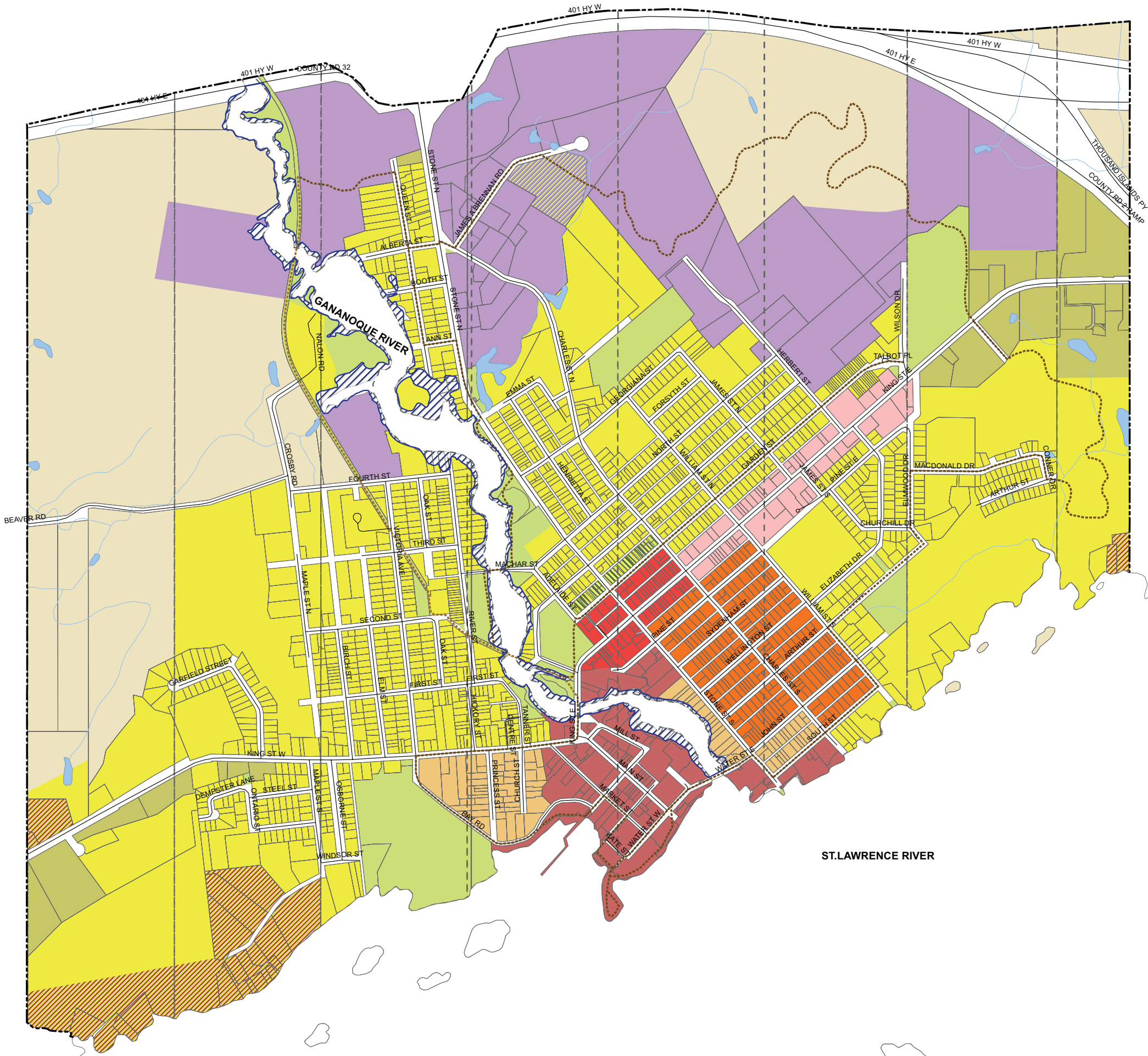


**Development Permit By-Law**  
**Schedule A -**  
**Development Permit Areas**

**Legend**

- Residential
- Garden Street Special Exception
- Estate Residential
- Traditional Residential
- Lowertown - Residential
- Lowertown - Mixed Use
- Commercial Traditional Core
- Progressive Commercial District
- Gateway Commercial
- Employment Lands
- Open Space
- Rural
- Former Waste Disposal Site
- Environmental Constraints
- Roads
- Recreational Pathway
- Parcels
- Lot Concessions
- Watercourse



LOT 09      LOT 10      LOT 11      LOT 12      LOT 13      LOT 14      LOT 15      LOT 16      LOT 17

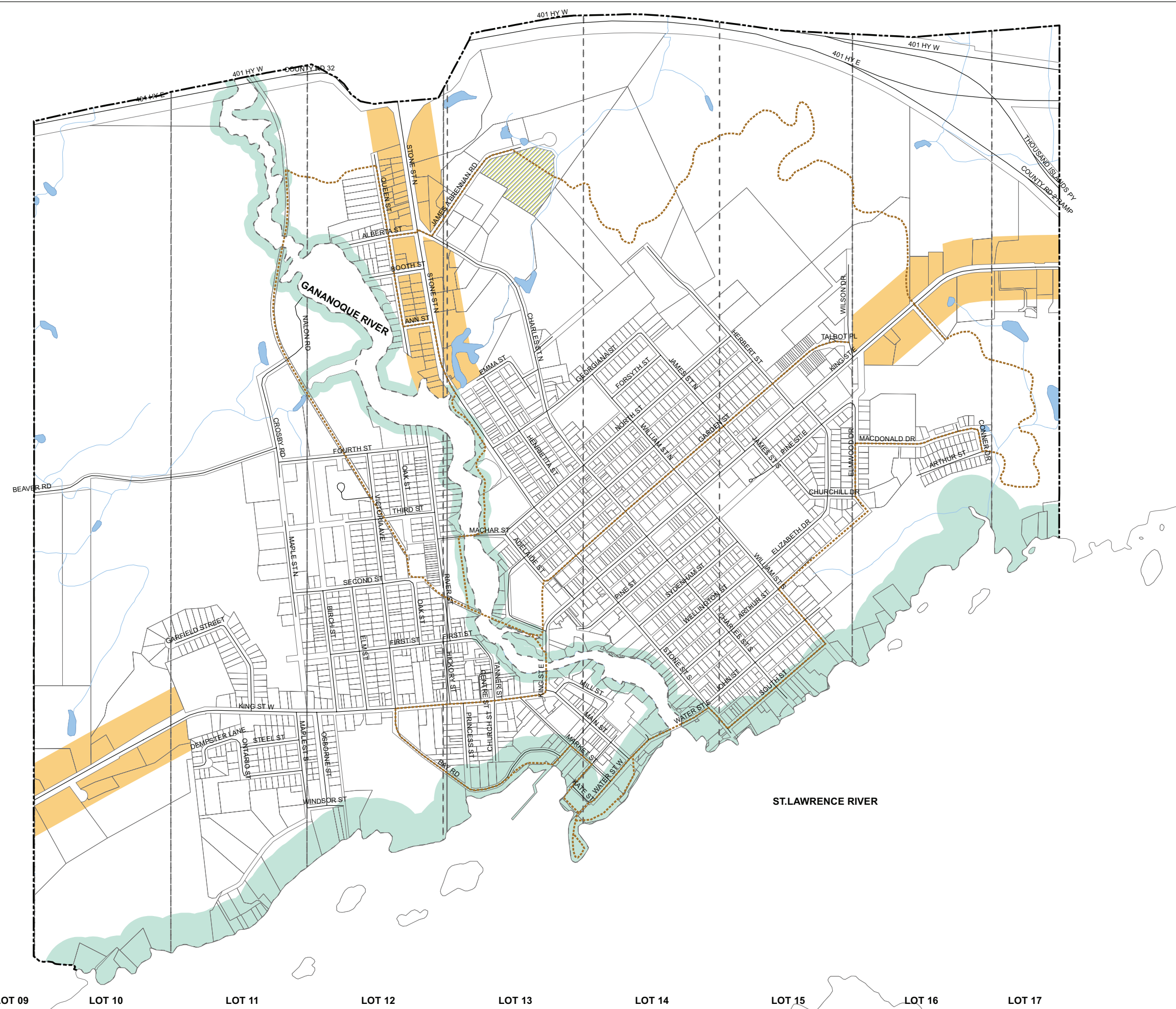


Drawings are produced by Stantec Consulting Ltd.  
 with base information supplied by the United Counties  
 of Leeds & Grenville (2007).  
 © September 2010

## Development Permit By-Law Schedule B - Overlays

### Legend

- Entrance Sector
- Waterfront Sector
- 100 metre Buffer from the St. Lawrence River  
30 metre Buffer from the Gananoque River
- Former Waste Disposal Site
- Roads
- Recreational Pathway
- Parcels
- Lot Concessions
- Watercourse
- Municipal Boundary









LOT 09      LOT 10      LOT 11      LOT 12      LOT 13      LOT 14      LOT 15      LOT 16      LOT 17

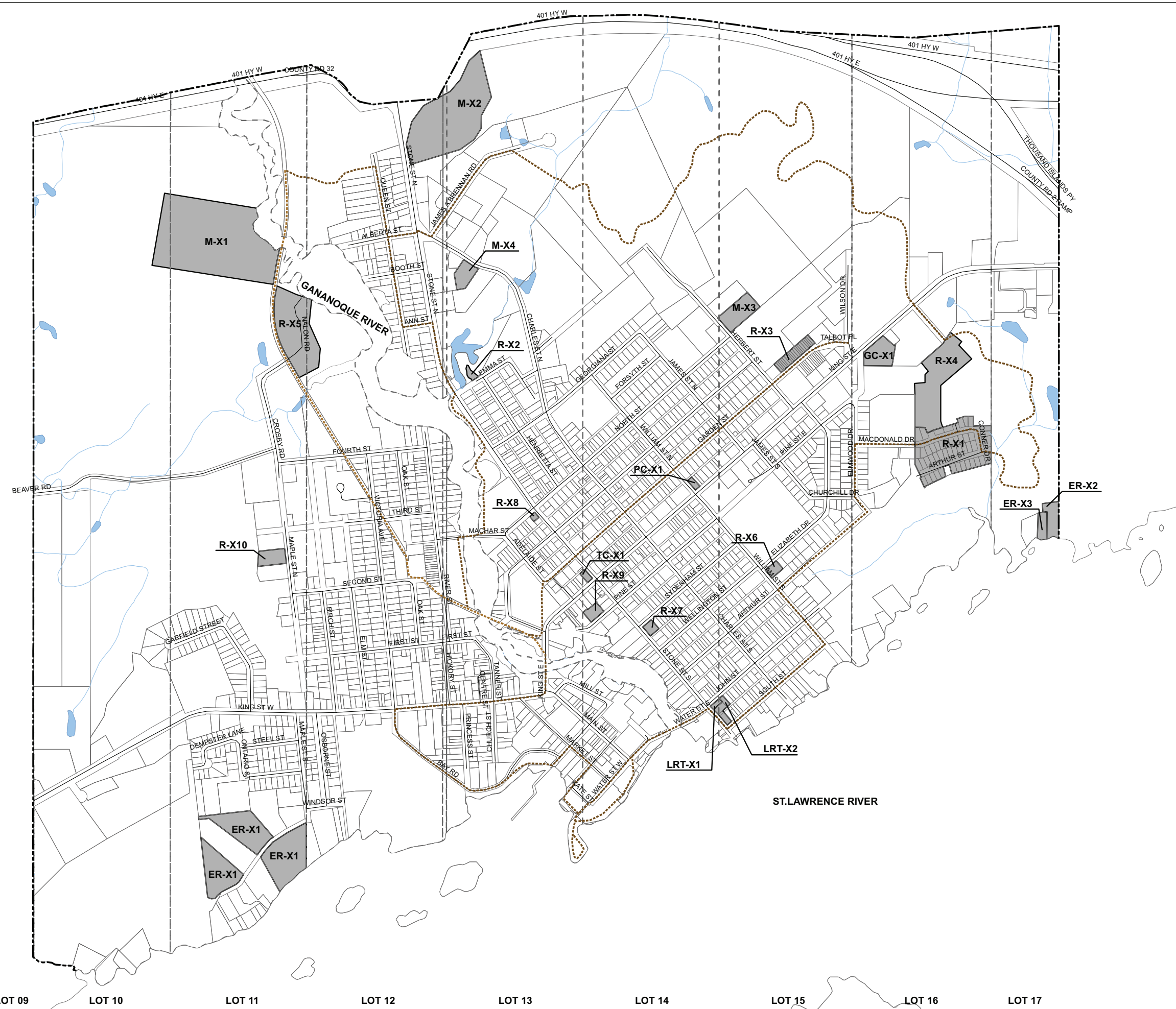


Drawings are produced by Stantec Consulting Ltd. with base information supplied by the United Counties of Leeds & Grenville (2007).  
 @ August 2010

## Development Permit By-Law Schedule C - Special Exception Areas

### Legend

-  Special Exception Areas
-  Roads
-  Recreational Pathway
-  Parcels
-  Lot Concessions
-  Watercourse



Drawings are produced by Stantec Consulting Ltd.  
 with base information supplied by the United Counties  
 of Leeds & Grenville (2007).  
 © September 2010

LOT 09      LOT 10      LOT 11      LOT 12      LOT 13      LOT 14      LOT 15      LOT 16      LOT 17