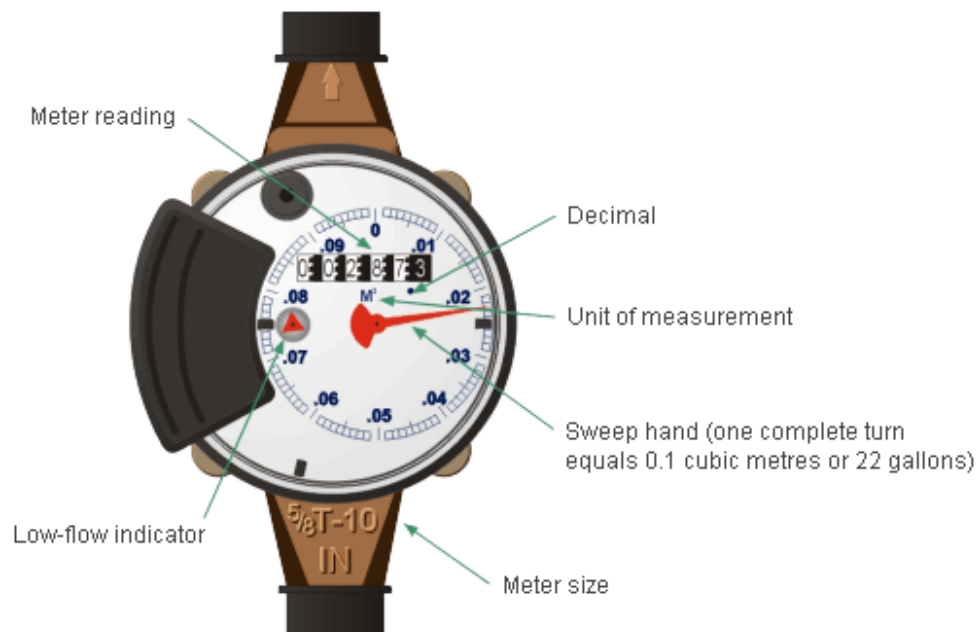


Tips on checking for water leaks – Standard T-10 Water Meter



- Typically water meters are located in the basement of your house. If you do not have a basement you could probably find the meter in a closet or utility room. They are not outside.
- Ensure all the water is off in the house.
- Check the Low-flow indicator (small triangle shown on the above illustration). If this triangle is moving while the water is off, something is leaking.
- A leaking tap, a running toilet, a leaking hot water tank, etc can waste a lot of water and in turn a lot of money.
- Unlike a tap, you can't always see or hear a toilet leaking. Take some food colouring or clothing dye and put a few drops in the back of the toilet and wait about 10-15 minutes. If colour appears in the bowl, the flush mechanism needs to be replaced or adjusted.
- A 1/4 "diameter continuous stream can waste 4,475 cubic meters in a three month period. This equates to a bill of \$4802 for water consumption and \$6,003 for the sewer portion.
- Do your due diligence and keep your eye on the indicator.

