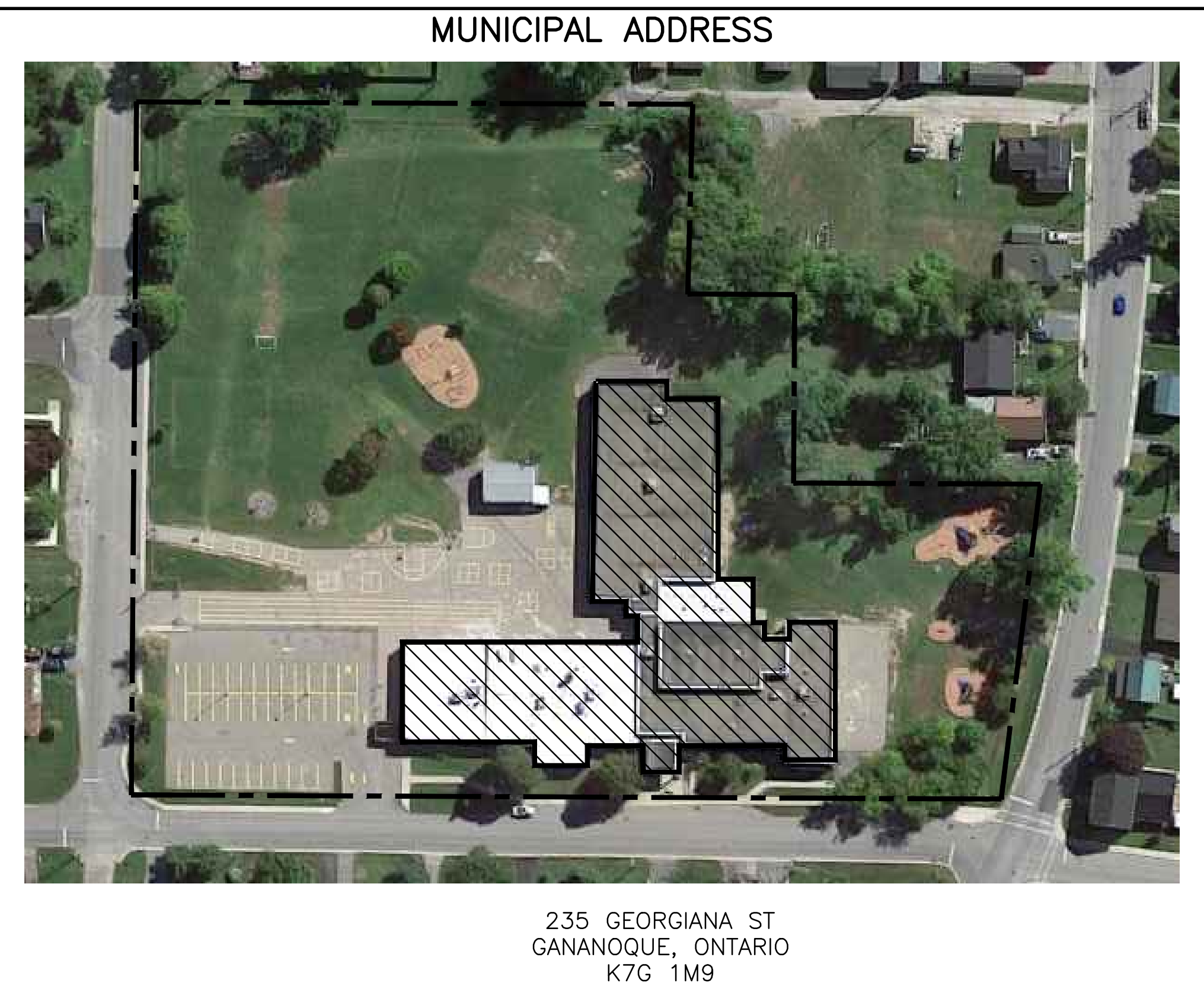


SITE DATA	
EXISTING LOT AREA	19,287.1 m ²
EXISTING FLOOR AREA	628.4 m ²
NEW ADDITION BUILDING AREA	3,154.5 m ²
EXISTING SCHOOL BUILDING AREA	3,792.8 m ²
TOTAL BUILDING AREA	3,792.8 m ²
LOT COVERAGE	19.61 %
TOPOGRAPHICAL AND SURVEY INFORMATION PROVIDED BY: JORDAN-BENNETT GEOMATICS INC. File No: 180595 LEGAL DESCRIPTION:	



235 GEORGIANA ST
GANANOQUE, ONTARIO
K7G 1M9

ZONING	
ZONING DESIGNATION: R (RESIDENTIAL) ZONE	
FRONT YARD DEPTH (MINIMUM)	4.5 M
EXTERIOR SIDE YARD WIDTH (MINIMUM)	7.0 M
REAR YARD DEPTH (MINIMUM)	1.2 M

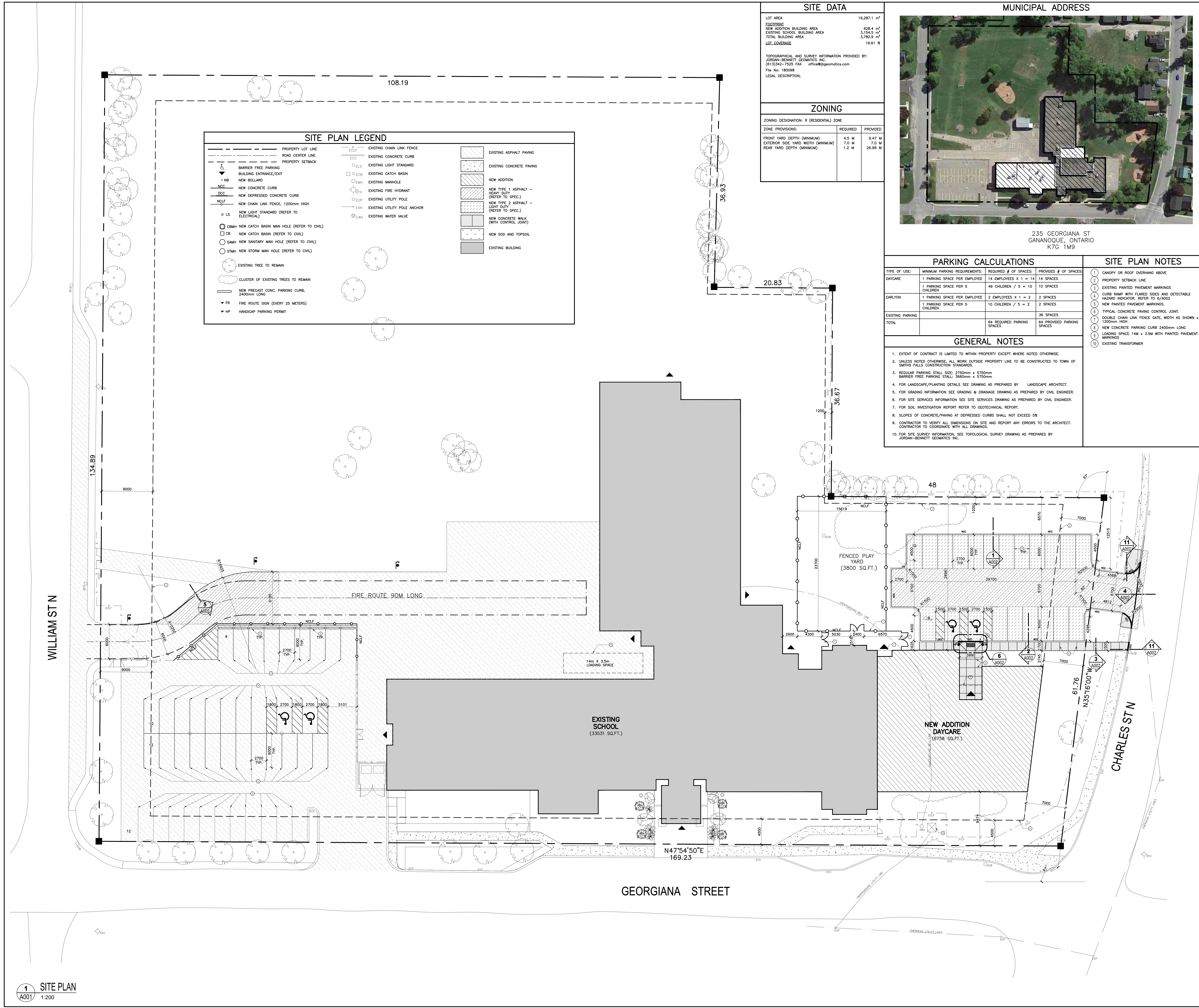
PARKING CALCULATIONS		
TYPE OF USE:	MINIMUM PARKING REQUIREMENTS:	REQUIRED # OF SPACES:
DAYCARE:	1 PARKING SPACE PER EMPLOYEE	14 EMPLOYEES X 1 = 14
	1 PARKING SPACE PER 5 CHILDREN	49 CHILDREN / 5 = 10
EARLYON:	1 PARKING SPACE PER EMPLOYEE	2 EMPLOYEES X 1 = 2
	1 PARKING SPACE PER 5 CHILDREN	10 CHILDREN / 5 = 2
EXISTING PARKING:		36 SPACES
TOTAL:	64 REQUIRED PARKING SPACES	64 PROVIDED PARKING SPACES

- SITE PLAN NOTES**
- CANOPY OR ROOF OVERHANG ABOVE
 - PROPERTY SETBACK LINE
 - EXISTING PAINTED PAVEMENT MARKINGS
 - CURB RAMP WITH FLARED SIDES AND DETECTABLE HAZARD INDICATOR REFER TO 6/A002
 - NEW PAINTED PAVEMENT MARKINGS
 - TYPICAL CONCRETE PAVING CONTROL JOINT
 - DOUBLE CHAIN LINK FENCE GATE, WIDTH AS SHOWN X 1200mm HIGH
 - NEW CONCRETE PARKING CURB 2400mm LONG
 - LOADING SPACE 14M X 3.5M WITH PAINTED PAVEMENT MARKINGS
 - EXISTING TRANSFORMER

- GENERAL NOTES**
- EXTENT OF CONTRACT IS LIMITED TO WITHIN PROPERTY EXCEPT WHERE NOTED OTHERWISE.
 - UNLESS NOTED OTHERWISE, ALL WORK OUTSIDE PROPERTY LINE TO BE CONSTRUCTED TO TOWN OF SMITHS FALLS CONSTRUCTION STANDARDS.
 - REGULAR PARKING STALL SIZE: 2700mm x 5750mm
BARRIER FREE PARKING STALL: 3600mm x 5750mm
 - FOR LANDSCAPE/PLANTING DETAILS SEE DRAWING AS PREPARED BY LANDSCAPE ARCHITECT.
 - FOR GRADING INFORMATION SEE GRADING & DRAINAGE DRAWING AS PREPARED BY CIVIL ENGINEER.
 - FOR SITE SERVICES INFORMATION SEE SITE SERVICES DRAWING AS PREPARED BY CIVIL ENGINEER.
 - FOR SOIL INVESTIGATION REPORT REFER TO GEOTECHNICAL REPORT.
 - SLOPES OF CONCRETE/PAVING AT DEPRESSED CURBS SHALL NOT EXCEED 3%.
 - CONTRACTOR TO VERIFY ALL DIMENSIONS ON SITE AND REPORT ANY ERRORS TO THE ARCHITECT.
 - FOR SITE SURVEY INFORMATION, SEE TOPOLOGICAL SURVEY DRAWING AS PREPARED BY JORDAN-BENNETT GEOMATICS INC.

SITE PLAN LEGEND

--- P	PROPERTY LOT LINE	--- ECLF	EXISTING CHAIN LINK FENCE	--- AS	EXISTING ASPHALT PAVING
--- RCL	ROAD CENTER LINE	--- ECC	EXISTING CONCRETE CURB	--- CC	EXISTING CONCRETE PAVING
--- PS	PROPERTY SETBACK	--- ELS	EXISTING LIGHT STANDARD	--- NA	NEW ADDITION
--- NB	BARRIER FREE PARKING	--- ECB	EXISTING MANHOLE	--- NTA	NEW TYPE 1 ASPHALT - HEAVY DUTY (REFER TO SPEC.)
--- NCE	BUILDING ENTRANCE/EXIT	--- EPH	EXISTING FIRE HYDRANT	--- NTL	NEW TYPE 2 ASPHALT - LIGHT DUTY (REFER TO SPEC.)
--- NCB	NEW BOLLARD	--- EUP	EXISTING UTILITY POLE	--- NCM	NEW CONCRETE MULK (WITH CONTROL JOINT)
--- NCC	NEW CONCRETE CURB	--- EAU	EXISTING UTILITY POLE ANCHOR	--- NS	NEW SOO AND TOPSOIL
--- NDC	NEW DEPRESSED CONCRETE CURB	--- EWV	EXISTING WATER VALVE	--- EB	EXISTING BUILDING
--- NCLF	NEW CHAIN LINK FENCE, 1200mm HIGH				
--- NLS	NEW LIGHT STANDARD (REFER TO ELECTRICAL)				
--- CBMH	NEW CATCH BASIN MAN HOLE (REFER TO CIVIL)				
--- CB	NEW CATCH BASIN (REFER TO CIVIL)				
--- SAMH	NEW SANITARY MAN HOLE (REFER TO CIVIL)				
--- STMH	NEW STORM MAN HOLE (REFER TO CIVIL)				
--- ET	EXISTING TREE TO REMAIN				
--- C	CLUSTER OF EXISTING TREES TO REMAIN				
--- NCP	NEW PRECAST CONC. PARKING CURB, 2400mm LONG				
--- FR	FIRE ROUTE SIGN (EVERY 25 METERS)				
--- HP	HANDICAP PARKING PERMIT				



NO.	REV.	DATE	ISSUE
1	0	2018/04/28	ISSUED FOR OWNER'S REVIEW

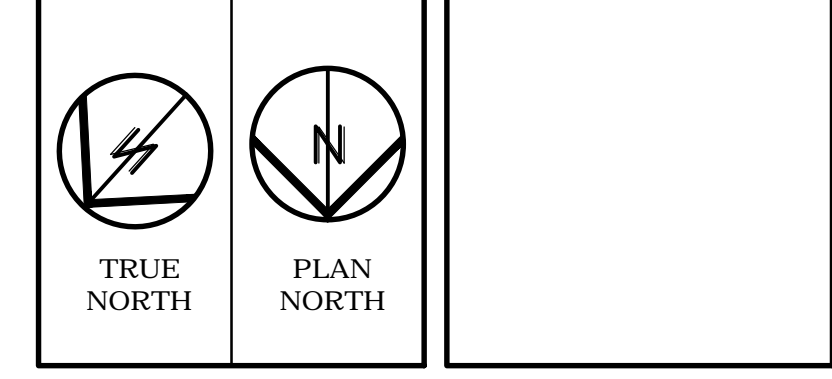
LES IDEES, CONCEPTS, DISPOSITIONS ET PLANS INDICATES OU REPRESENTES PAR CE DESSIN APPARTIENNENT A EDWARD J. CUHACI AND ASSOCIATES ARCHITECTS INC. ET ONT ETE CREES, ET DEVELOPPES POUR ETRE UTILISES DANS LE CADRE DU PRESENT PROJET. ILS NE DOIVENT PAS ETRE UTILISES A D'AUTRES FINS NI COMMUNIQUES A QUI QUE CE SOIT SANS LA PERMISSION ECRIITE DE EDWARD J. CUHACI AND ASSOCIATES ARCHITECTS INC.

L'ARCHITECTE DECLINE TOUTE RESPONSABILITE DECOURANT DE PROBLEMES RESULTANT DE LA NON RESPECT DES PLANS ET DEVIS OU DE L'INTENTION DU CONCEPT QU'ILS TRANSMETTENT, OU DE TOUTS PROBLEMES RESULTANT DU DEFAUT DE TIERS D'OBTENIR OU DE SUIVRE LES INSTRUCTIONS DE L'ARCHITECTE RELATIVEMENT AUX DREMIERS, OMISSIONS, INCONSEQUENCES, AMBIGUÏTES OU CONTRADICTIONS ALLEGUES. L'ENTREPRENEUR DOIT VERIFIER TOUTES LES DIMENSIONS SUR PLACE ET INFORMER L'ARCHITECTE DE TOUT EGART AVANT LE DEBUT DES TRAVAUX. NE PAS MESURER LES DESSINS A L'ECHELLE.

ALL IDEAS, DESIGNS, ARRANGEMENTS, AND PLANS INDICATED OR REPRESENTED BY THIS DRAWING ARE OWNED BY AND THE PROPERTY OF EDWARD J. CUHACI AND ASSOCIATES INC. AND WERE CREATED, EVOLVED, AND DEVELOPED FOR USE ON AND IN CONNECTION WITH THE SPECIFIC PROJECT. NONE OF THE IDEAS, DESIGNS, ARRANGEMENTS OR PLANS SHALL BE USED BY OR DISCLOSED TO ANY PERSON, FIRM, OR CORPORATION FOR ANY PURPOSE WHATSOEVER WITHOUT THE WRITTEN PERMISSION OF EDWARD J. CUHACI AND ASSOCIATES INC.

THE ARCHITECT WAIVES ANY AND ALL RESPONSIBILITY AND LIABILITY FOR PROBLEMS WHICH ARISE FROM FAILURE TO FOLLOW THESE PLANS, SPECIFICATIONS, AND THE DESIGN INTENT THEY CONVEY, OR FOR PROBLEMS WHICH ARISE FROM OTHERS FAILURE TO OBTAIN AND/OR FOLLOW THE ARCHITECT'S GUIDANCE WITH RESPECT TO ANY ERRORS, OMISSIONS, INCONSISTENCIES, AMBIGUITIES OR CONFLICTS WHICH ARE ALLEGED.

CONTRACTOR TO VERIFY ALL DIMENSIONS AND NOTIFY THE ARCHITECT OF ANY DISCREPANCIES BEFORE WORK COMMENCES. DO NOT SCALE DRAWINGS.



EDWARD J. CUHACI & ASSOCIATES ARCHITECTS INC.
171 Slater St, Suite 100, Ottawa, Ontario, K1P 5H7
Fax: (613) 238-1944 Telephone: (613) 238-7135 E-mail: eh@edjca.com

PROJECT TITLE/TITRE DU PROJET
ST. JOSEPH CATHOLIC SCHOOL - ADDITION
235 GEORGIANA ST, GANANOQUE, ONTARIO
CATHOLIC DISTRICT SCHOOL BOARD OF EASTERN ONTARIO
2755 HIGHWAY 43 KEMPTVILLE, ONTARIO

DRAWING TITLE/TITRE DU DESSIN
SITE PLAN

SCALE	AS SHOWN	PROJ. No.	ISSUE No.	REV. No.
ECHELLE	AS SHOWN	1822	-	-
DRAWN BY	DESIGN PAR	SJ	DRAWING/DESSIN	
CHECKED BY	VERIFIE PAR	JJ		
DATE	APRIL 2018			

A001

ACAD FILE/FICHER: 1822-A001.DWG