

DRAFT PLAN OF SUBDIVISION
 PART OF LOT 16
 CONCESSION 1
 TOWN OF GANANOCQUE
 SCALE = 1 : 750

DRAFT PLAN NOTES:

1. LOTS 1 THROUGH 11 ARE TO BE MULTI-UNIT RESIDENTIAL.
2. LOTS 12 THROUGH 15 ARE TO BE SINGLE-FAMILY RESIDENTIAL.
3. BLOCK F & M ARE TO BE PARK LOTS FOR TOWN OF GANANOCQUE.
4. BLOCK E, M, & O ARE TO BE 0.3M RESERVES.
5. BLOCK C IS TO BE SINGLE-FAMILY RESIDENTIAL ADDED TO PORTION OF THOMAS STREET (TO BE STOPPED UP AND CLOSED).

ADDITIONAL INFORMATION REQUIRED UNDER SECTION 51(17)(a)(ii) OF THE PLANNING ACT

- a) AS NOTED
- b) AS ILLUSTRATED ON PLAN
- c) AS ILLUSTRATED ON PLAN
- d) 2.8.3 UNIT TOWNHOUSE DWELLINGS
- e) NORTH - COMMERCIAL
- f) WEST - RESIDENTIAL
- g) EAST - RESIDENTIAL
- h) AS ILLUSTRATED ON PLAN
- i) MUNICIPAL WATER
- j) MANURE CLAY
- k) AS ILLUSTRATED ON PLAN
- l) AS ILLUSTRATED ON PLAN

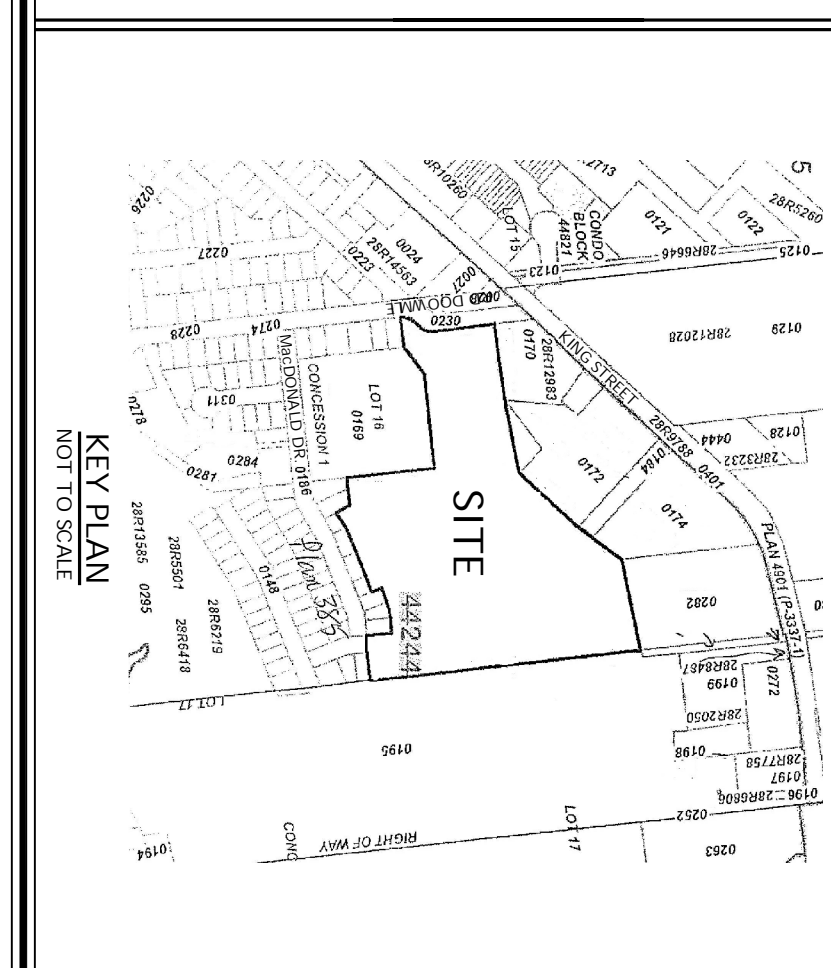
SITE AREA IS 78418.2 SQUARE METERS
 APPLICATION NO. _____

SITE STATISTICS		PROPOSED SITE
2) PARK LOTS (TOTAL)	REQUIRED	78418.2 SQ.M.
PARK LOTS: BLOCK F, BLOCK T, AREA		10010.8 SQ.M.
TOTAL AREA FOR PARK LOTS		12,889.5 SQ.M.

SITE BENCHMARK
 1. SITE BENCHMARK IS TOP OF TRANSFORMER PAD NEAREST THE SOUTHEAST CORNER OF LOT 17.
 2. ELEVATIONS ARE GEODETIC AND HAVE BEEN DERIVED USING GPS (NAD 83, CSRS 1997.0)

SURVEY INTEGRATION NOTES:
 1. THE INFORMATION PROVIDED ON THIS SURVEY COMES WITH SECTION 4(1) & (2) OF THE SURVEY ACT AND IS ACCURATE AT THE 99% CONFIDENCE LEVEL.
 2. COORDINATES HAVE BEEN DIRECTLY OBSERVED USING GPS.
 3. REAL-TIME NETWORK (RTN) COORDINATES FROM TOWN OF GANANOCQUE NETWORK CONVERTED TO GRID DISTANCES BY MULTPLYING BY THE AVERAGE COMBINED SCALE FACTOR OF 0.9999971.

SURVEY NOTES:
 1. BEARINGS ARE OBTAINED DERIVED FROM GPS - REAL TIME NETWORK (RTN) COORDINATES. THE COORDINATES ARE ACCURATE AT THE 99% CONFIDENCE LEVEL. (NAD 83, CSRS 1997.0) AND ARE REFERRED TO THE CENTRAL MERIDIAN IN UTM ZONE 18 Q (75°W).
 2. SHORT STANDARD IRON BARS (SSIB) WERE USED DUE TO INSUFFICIENT DISTANCES AND COORDINATES ILLUSTRATED ON THIS PLAN ARE IN METERS AND CAN BE CONVERTED TO FEET BY DIVIDING BY 0.3048.
 3. DISTANCES AND COORDINATES ILLUSTRATED ON THIS PLAN ARE IN METERS AND CAN BE CONVERTED TO FEET BY DIVIDING BY 0.3048.



SURVEYOR'S CERTIFICATE

I HEREBY CERTIFY THAT THE BOUNDARIES OF THE LANDS TO BE SUBDIVIDED AND THEIR RELATIVE ACCURACY TO THE SURVEY SHOWN ON THIS PLAN HAVE BEEN DETERMINED ACCURATELY AND CORRECTLY SHOWN.

OCTOBER 24, 2018
 W. B. COLLETT
 ONTARIO LAND SURVEYOR

COLLETT SURVEYING LTD.
 SUITE 2020, 51 KING ST. E., BRACKLEY GANANOQUE, ONT. L0G 1A0
 TEL: (705) 486-1111 FAX: (705) 486-1112
 E-MAIL: info@collettsurveying.com CA
 VISIT OUR WEB SITE AT WWW.COLLETTSURVEYING.COM CA

MAP CHECK: J.G. DNM BY: J.G. FILE NO: 9344 DP
 OCTOBER 24, 2018