

Lane

T R E E T

PARKING SPACES
(10' x 20')

14
COVERED
PARKING
(13'-2" x 22'-7")
3,993 sq.ft

5
15 CLARENCE ST.
EXISTING TEXTRON BUILDING
RENOVATED 4 STOREY
G.F.A. 33,860 sq.ft.
24 UNITS
FOOTPRINT 8,367 sq.ft

2
15 CLARENCE ST.
NEW 5 STOREY BUILDING
G.F.A. 58,549 sq.ft.
27 UNITS
FOOTPRINT 13,910 sq.ft

30
PARKING SPACES
COVERED GARAGE
(20' x 10')

18
I
STOI
RENOV
G.F.A.
FOOTP

1 TOWN PARKING
2 TOWN PARKING
3 TOWN PARKING
4 TOWN PARKING
5 TOWN PARKING

6 TOWN PARKING
7 TOWN PARKING

8 TOWN PARKING
9 TOWN PARKING
10 TOWN PARKING

3
PARKING SPACES
(10' x 20')
20' [6.10]

5
PARKING SPACES
(10' x 20')

2
GARAGE PARKING
(10' x 20')
563 sq.ft.

2
GARAGE PARKING
(10' x 20')
563 sq.ft.

4
PARKING SPACES
(10' x 20')

NEW 3 STOREY
ADDITION
TO MATCH EXISTING

BRENNAN
CUSTOM HOMES INC.
130 BLOOR ST. WEST, SUITE 801 TORONTO, ONTARIO M5S 1N5
TELEPHONE: (416) 972-1662 FAX: (416) 972-4251

CLARENCE STREET
DEVELOPMENTS INC.
130 BLOOR ST. WEST, SUITE 801 TORONTO, ONTARIO M5S 1N5
TELEPHONE: (416) 972-1662 FAX: (416) 972-4251

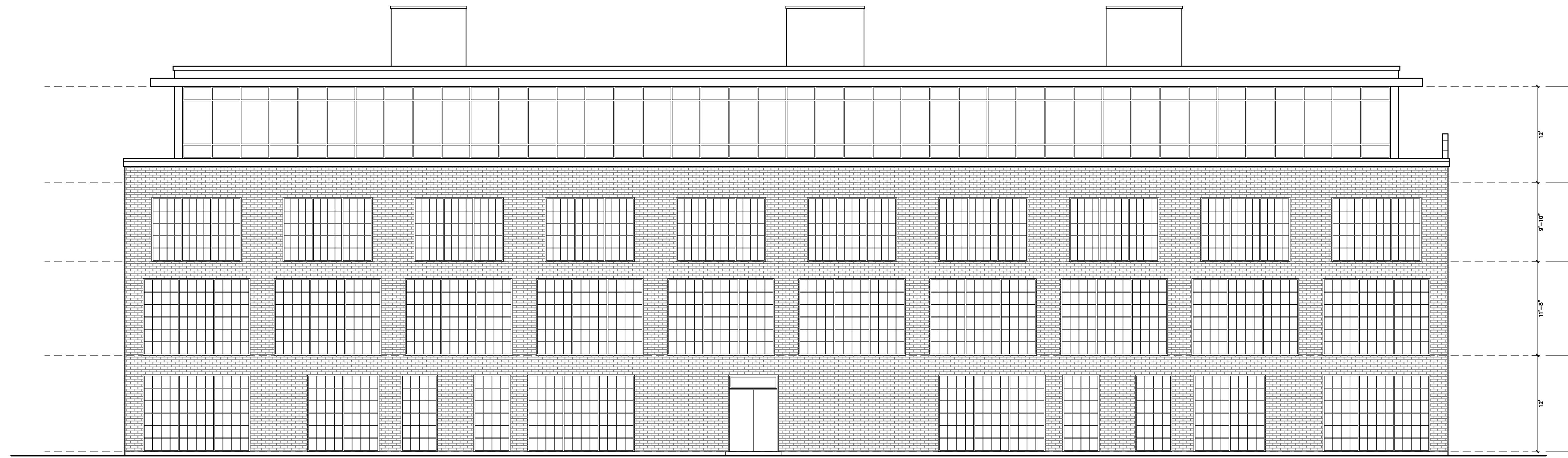
NO.	REVISIONS	DATE

ISSUED:

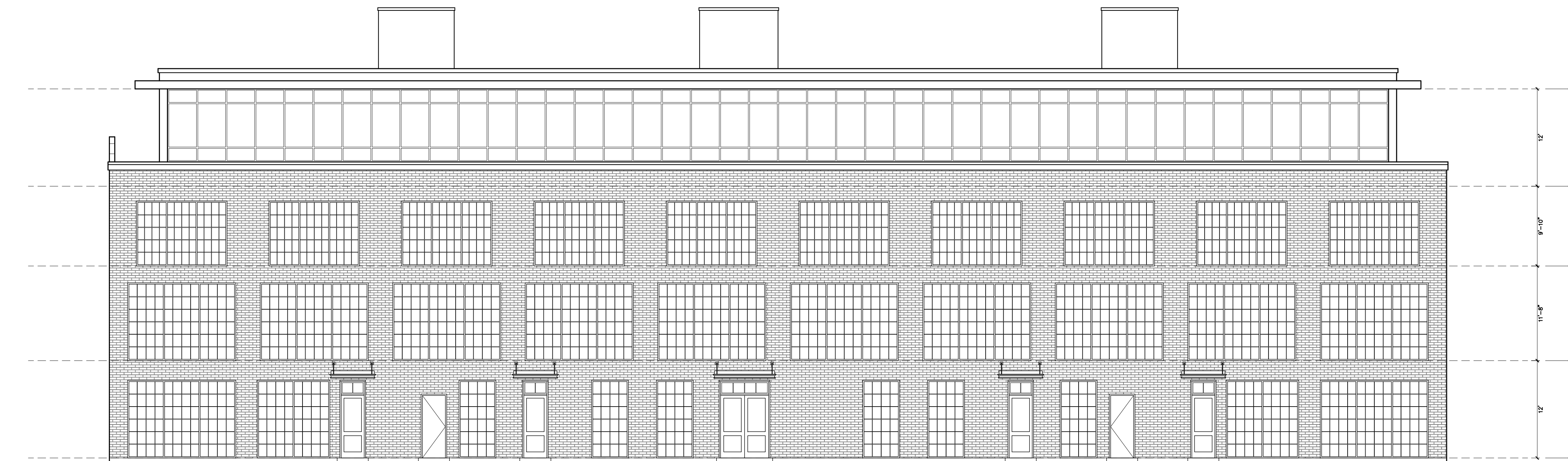
15 CLARENCE ST
EXISTING TEXTRON

SITE PLAN

DRAWN BY:	CHECKED BY:
DATE: May 14, 2013	SCALE: 3/32" = 1'-0"
PROJECT NO:	DRAWING NO:
	A-1



WEST ELEVATION



EAST ELEVATION

NO.	REVISIONS	DATE
	Development Application FINAL	MAY 14 2014
	Development Application	MAR 6 2014
	Engineer	OCT 15 2013
	Purchase & Sale Agreement	JULY 30 2013
	Town Meeting	FEB. 18 2013

ISSUED:

15 CLARENCE ST.
EXISTING TEXTRON

ELEVATIONS

DRAWN BY:	CHECKED BY:
DATE: May 14, 2013	SCALE: 1/8" = 1'-0"
PROJECT NO.:	DRAWING NO.: