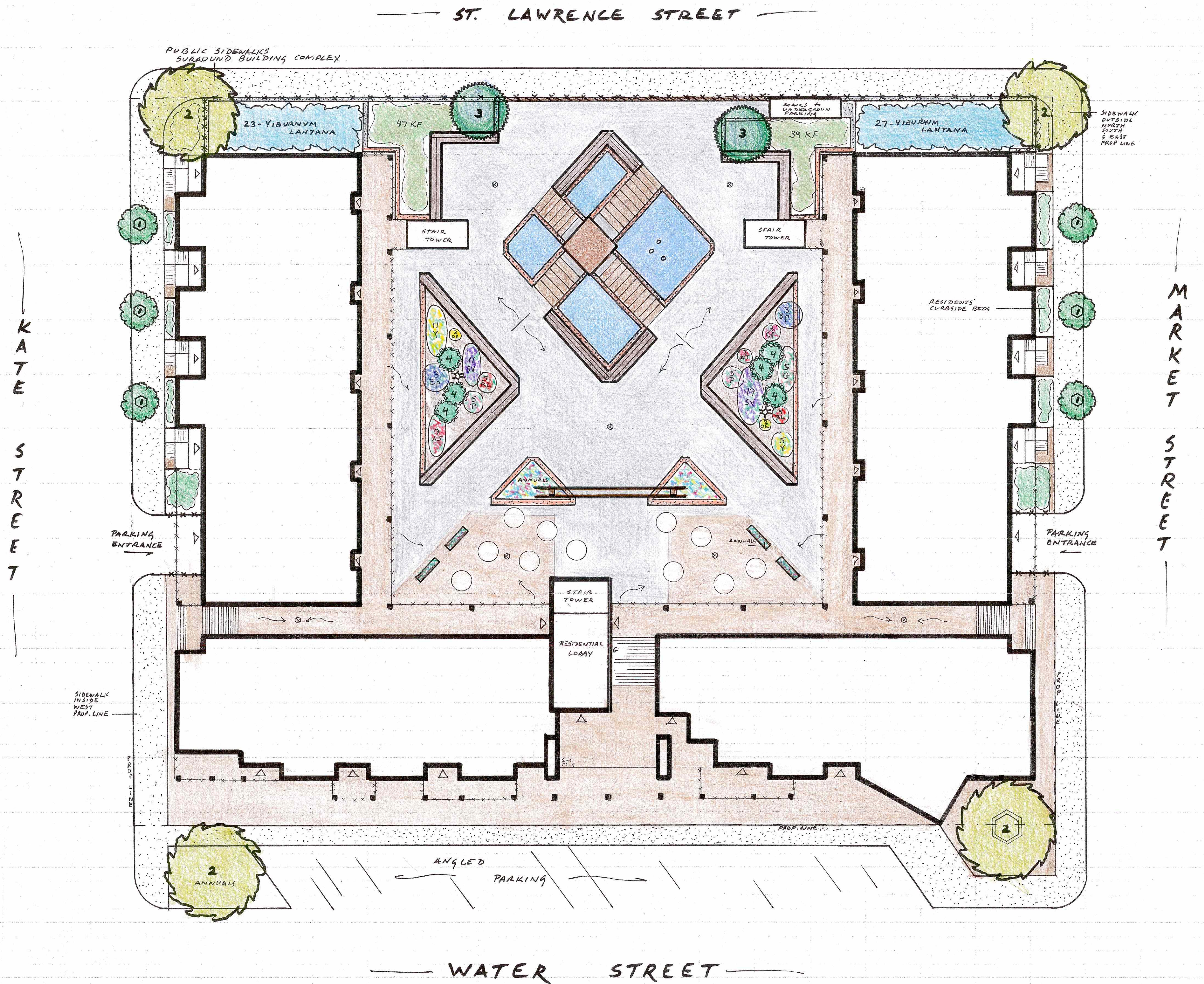
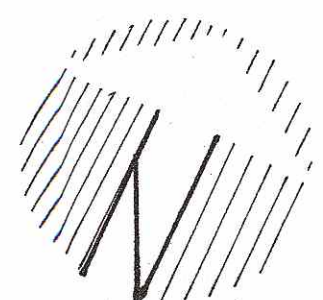


ISLAND HARBOUR CLUB

LANDSCAPE DESIGN by
MICHÈLE WHITE

Michèle White
artscapes
TEL/FAX: 613-826-1368

mwhite
SCALE 1:200

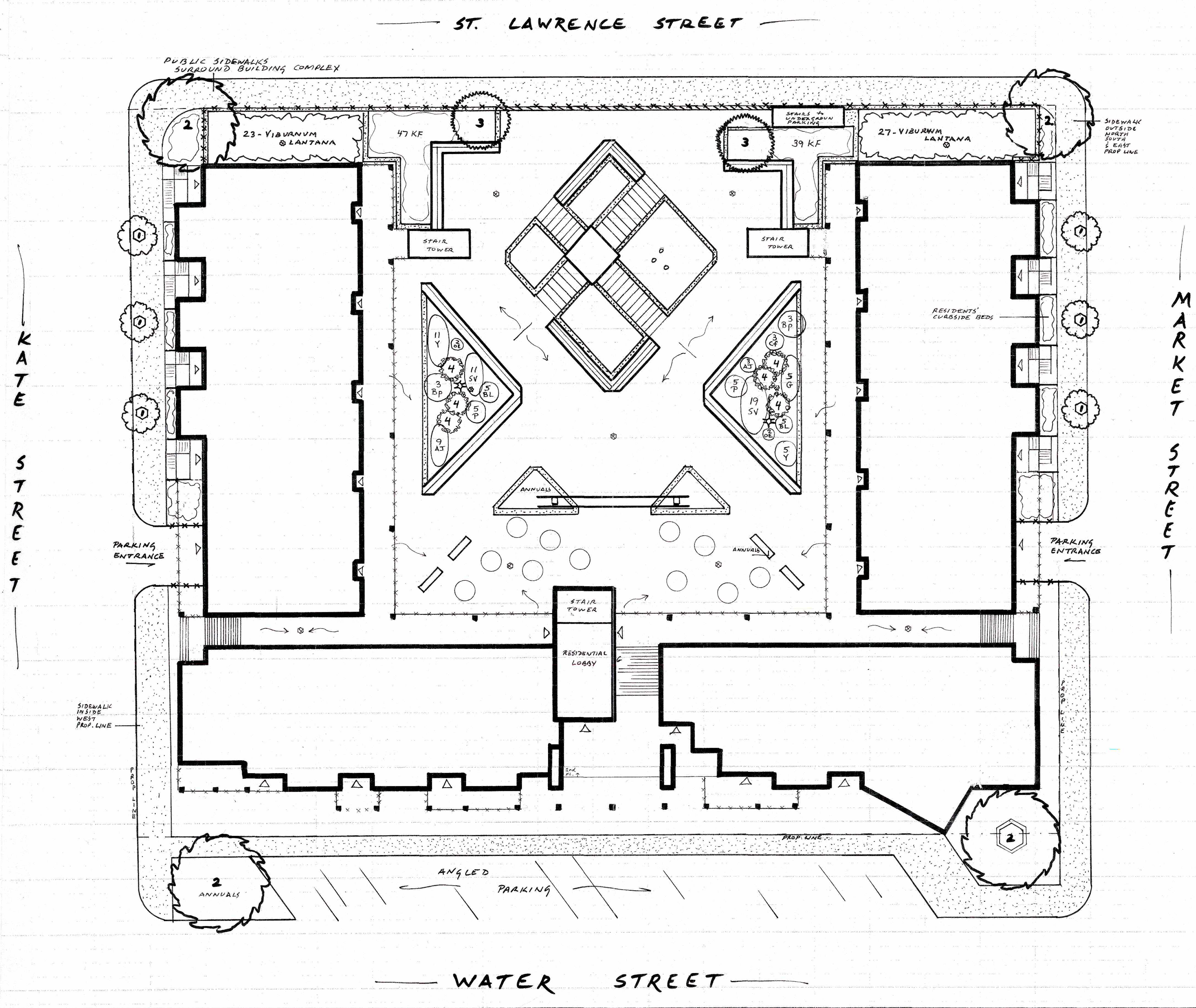


ISLAND HARBOUR CLUB

LANDSCAPE DESIGN by MICHELE WHITE

Michèle White
artscapes
TEL/FAX: 613-826-1368

m white
SCALE 1:200



PLANTING

SCALE 1:200

WOODY

Code Qty

- 1 (6) QUERCUS ROBUR 'FASTIGIATA' - Columnar Oak
- 2 (4) GINKGO BILBOA - Maidenhair Tree
- 3 (2) PINUS CEMBRA - Swiss Stone Pine
- 4 (6) ACANTHOPANAX SIEBOLDIANUS - Five Leaf Aralia - stool tri-annually
- (50) VIBURNUM LANTANA - Wayfaring Bush



PAEONIA DENOTHERA GINKGO



ACANTHOPANAX BAPTISIA ECHINACEA



VIBURNUM SALVIA SEDUM

HERBACEOUS

PERENNIALS

Code Qty

- AJ (12) SEDUM SPECTABILE 'AUTUMN JOY'
- BL (10) GAILLARDIA 'GRANDIFLORA 'GOLDEN'
- BP (6) BAPTISIA AUSTRALIS: Blue
- CF (3) ECHINACEA PURPUREA
- G (5) GYPSOPHILA PANICULATA 'COMPACTA PLENA'
- KF (86) CALAMA GRADSTIS ACUTIFLORA 'KARL FORSTER'
- OE (4) OENOTHERA MISSOURIENSIS
- P (5) PAEONIA LACTIFLORA 'CORAL CHARM'
- SV (30) SALVIA 'MAY NIGHT'
- Y (16) ACHILLEA 'CORONATION GOLD'



PINUS QUERCUS CALAMAGROSTIS



GAILLARDIA



ACHILLEA

SUGGESTD ANNUALS: SELECTIONS MADE BY MAINTENANCE CONTRACTOR ACCORDING TO AVAILABILITY

WATER STREET

- ARCTOTIS sp
- CENTAURBA sp
- CHEIRANTHUS CHEIRI
- RECHENONZIA CAUBRANICA
- GOMPHRENA PUBERBA
- LOBULARIA MARITIMA
- MESEMBRYANTHEMUM
- PENNISSETUM SETACEUM
- PORTULACA sp
- SALVIA sp
- TAGETESP

WOOD PLANTERS & SMALL TRIANGULARS

- ANCHUSA
- BEGONIA
- BRADWALLIA
- COLEUS
- IMPATIENS
- LOBELIA
- MIMULUS
- NEMOPHILA
- NICOTIANA
- THUNBERGIA
- TORENIA

RESIDENTS' CURBSIDE BEDS

→ CLIENTS' CHOICE ←

SOIL

CURBSIDE BEDS: USE ENRICHED BEDDING SOIL
PLANTERS: USE SOILLESS MIX AMENDED WITH BONE & BLOOD MEAL

PLANTERS

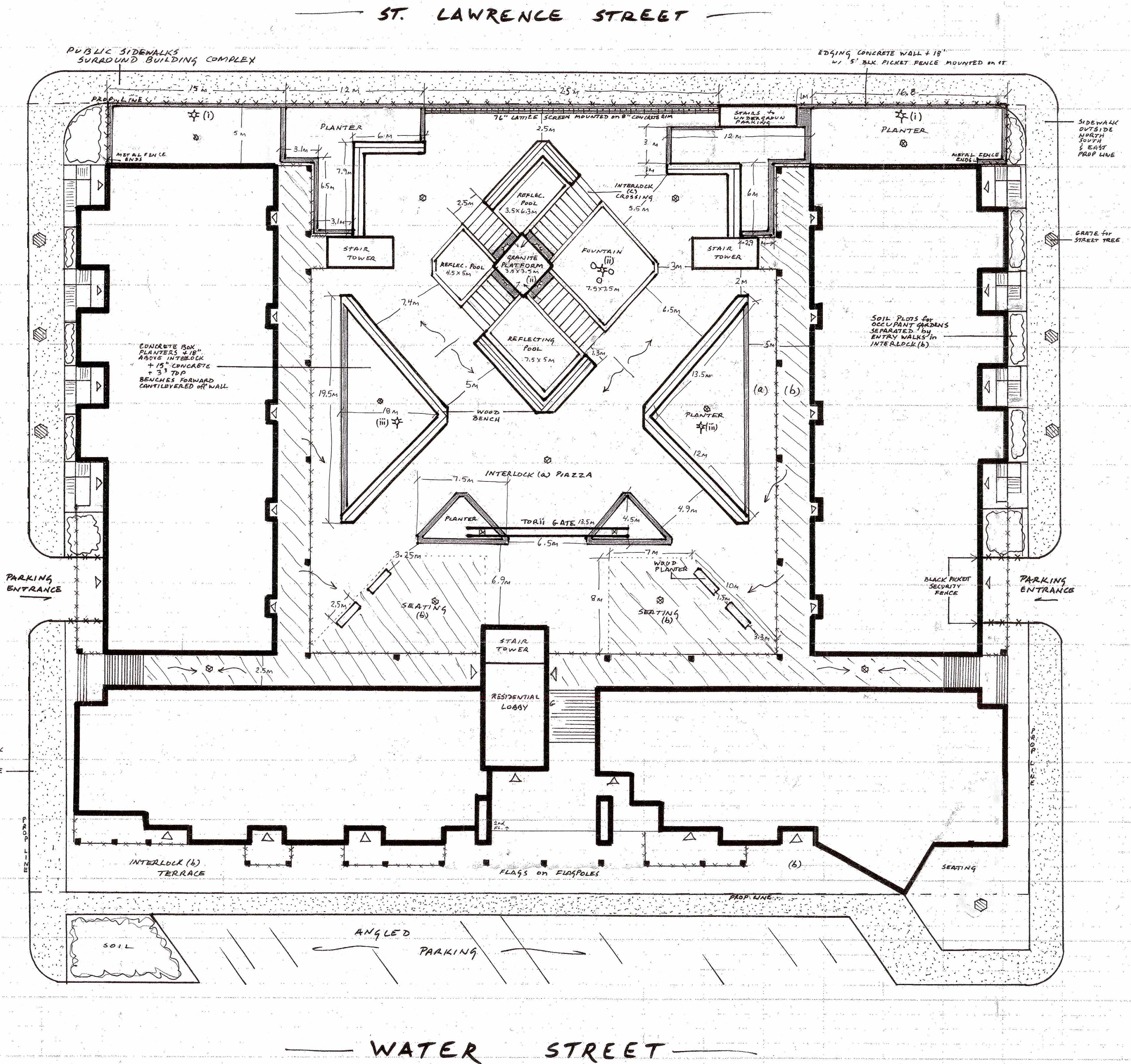
LINE BOTTOMS AND SIDES WITH 1/2" INSULATING FOAM PANELS - 1st Layer
LAY FILTER CLOTH - 2nd Layer
FILL WITH SOILLESS MIX TO WITHIN 1/2" TOP
CAREFUL IRRIGATION ESSENTIAL / MAINTAIN FERTILITY

ISLAND HARBOUR CLUB

LANDSCAPE DESIGN by
MICHÈLE WHITE

Michèle White
artscapes
TEL/FAX: 613-826-1368

m white
SCALE 1:200



ST. LAWRENCE STREET

WATER STREET

KATE STREET

MARKET STREET

ISLAND HARBOUR CLUB

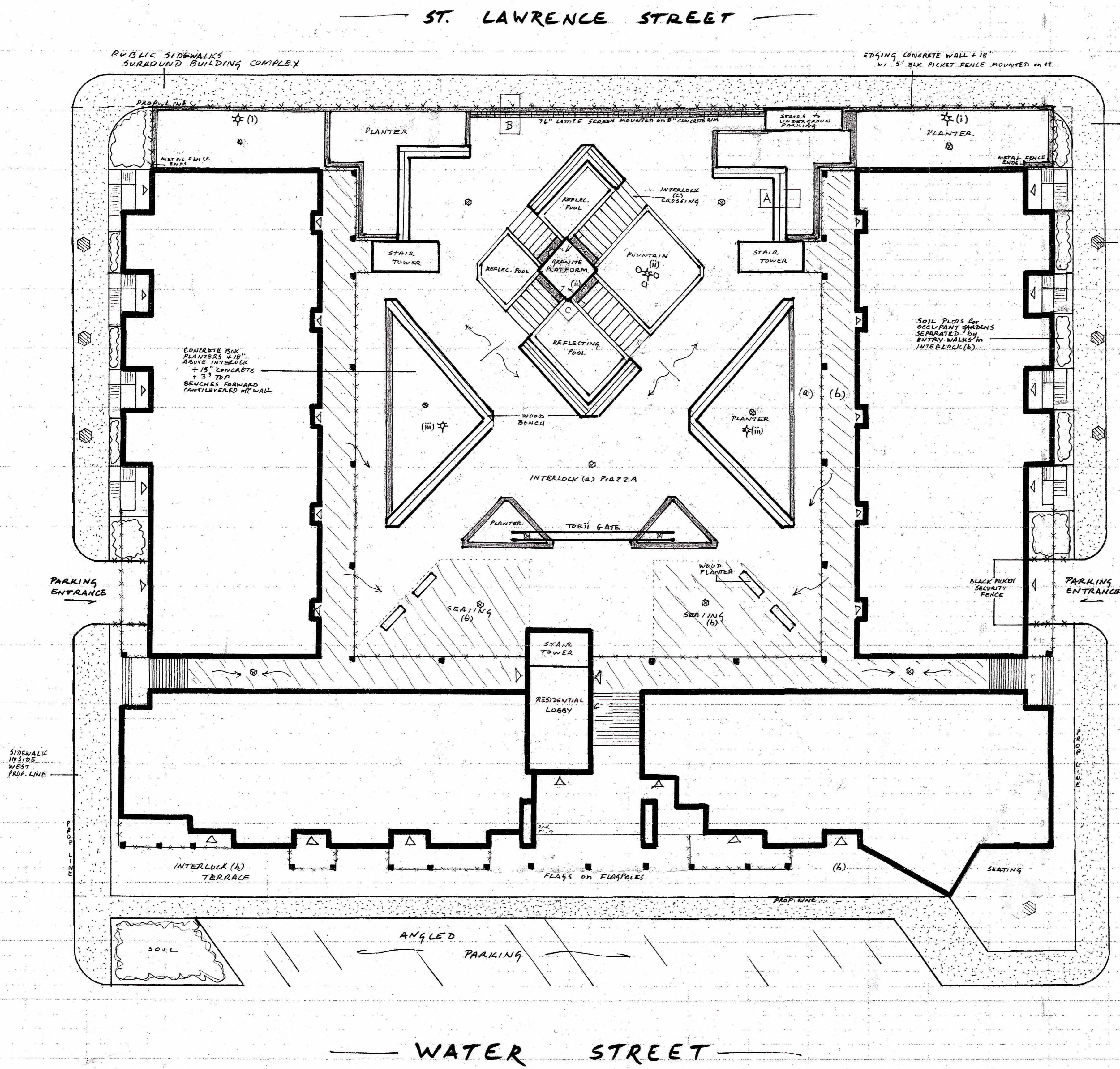
LANDSCAPE DESIGN by MICHÈLE WHITE

artscapes
TEL/FAX: 613-826-1368

SCALE 1:200



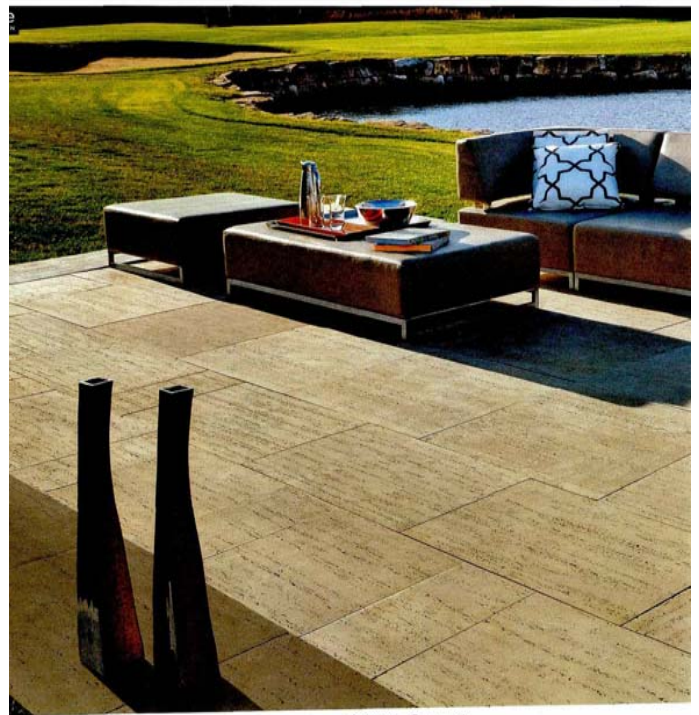
KATE STREET



HARDSCAPE CONSTRUCTION → ILLUSTRATIONS NOT TO SCALE

- WALLS:** For EDGING - PLANTERS - POOLS MADE OF 8" THICK CONCRETE. PUBLIC FACE OF CONCRETE VENEERED W/ RUSSET TONED CULTURED STONE. BASES OF BALCONY PILLARS SIMILARLY VENEERED. CONCRETE WALL CAPPED W/ 3" GREY STONE BLOCKS EXCEPT WHERE WOOD PLANK BENCHES INSTALLED. PLANK BENCHES MOUNTED BY BRACES IN CONCRETE WALLS.
- GROUND PLANE:** PIAZZA FLOOR IN INTERLOCK AS WELL AS EXTERIOR GROUNDS OF COMPLEX. 3 STYLES OF INTERLOCK TYPED BLOCK: (a) OPEN PIAZZA: TAVERTEINA RIVERA (25) - MIX 30x30 W/ 30x20 SLABS LAID SQUARE. (b) PASSAGES UNDER BALCONY & SOUTH END: BLU CONTEMPORARY POLISHED CHESTNUT BROWN (08) - 13x19 1/2 SLABS LAID DIAGONAL TOP LEFT TO BOTTOM RIGHT. (c) ACCENT CROSSING IN PONDS: BOREALIS SAUVIGNON OAK (60) - 5x30 SLABS LAID AS DRAWN FOR PONDERS WITH PLATFORMS: BOREALIS DIVIDED 6x15x1 1/2 REQ. EXTERIOR HARDSCAPE WITH SIDEWALK PERIMETERS: REPEAT MATERIAL (b) - LAID SQUARE.
- DRAINAGE:** DRAINAGE PATTERN & PLACEMENT OF DRAINS (->B) ESTABLISHED BY INTERLOCK SUBFLOOR GRADING. DRAINS IN 2 CORNER RECTANGULAR AND 2 LARGE TRIANGULAR PLANTERS. WEERING LAYERS @ BASE T-PLANTERS AND SMALL TRIANGULARS ALLOW PASSIVE DRAINAGE TO CENTER.
- SECURITY FENCING:** BLACK METAL PICKET FENCE +60" MOUNTED ON 18" CONCRETE RIM ENCLOSURE N. END PARKING ROOF. BLACK METAL PICKET FENCE +60" BLOCKS OPEN SIDES OF DESCENDING PARKING RAMP FROM STREET LEVEL.
- LATTICE SCREEN:** CEDAR WOOD LATTICE 7/8" SET ON 8" CONCRETE RIM FRONT'S PICKET FENCE FROM LEFT T-PLANTER TO RIGHT PARKING STAIRS. BOLT SCREEN TO 18" RIM @ ROOF EDGE.
- ACCENTS:** 7 METAL SIDEWALK GRATES FOR STREET TREES. LARGE WOOD PLANK BENCHES X-CANTILEVERED @ PANDS. 3 FLAGPOLES @ FRONT ENTRANCE. LOW VOLTAGE LIGHTING TO HIGHLIGHT FEATURES: (i) FLOOD LIGHT CORNER ROOF SURROUS, (ii) LIGHT FOUNTAIN AND PLATFORM, (iii) LOW LIGHT BRINGS OUT PLANT TEXTURES.
- FOUNTAIN AND POOLS:** 6" CONCRETE WALLS WITH 3" GREY STONE BLOCKS MAKE WASHING & REFLECTING W/ W/IR. QUARLES TRIO. POOLS BISected W/ CROSSING WALKS IN BOREALIS. LINE POOLS W/ DRESSED FLAG - F STREAK CHARCOAL GRANITE. FILTERS & PUMPS UNDER 12" PIECE PLATFORM OF 3" THICK NATIVE RUSSET GRANITE (25 SLABS). 14" PLATFORM SURROUNDED BY 7" STERS ILLUMINATED BY LIGHTS UNDER PLATFORM LIPS. NB: BENCHES 1 PLANK WIDER THAN PLANTER BENCHES -> THICKER CONCRETE WALLS & LONGER METAL BRACES TO ACCOMMODATE CANTILEVERING.

NB: ALL WALL HEIGHTS CITED REPRESENT VISIBLE SPAN FROM INTERLOCK TO TOP. MUST ADD DEPTH OF INTERLOCK TILE FOR HEIGHT OF CONCRETE FORMS FROM TOP DOWN TO CONCRETE ROOF SUBSTRATE.



TRAVERTINA

TRAVERTINA

20" x 10" - 20" x 20"

37
116R
ROCK GARDEN BROWN

44
IVORY

57 x 568 = 354 (mm)
2 1/4 x 20 = 30 (in)

57 x 508 = 508 (mm)
2 1/4 x 20 = 20 (in)

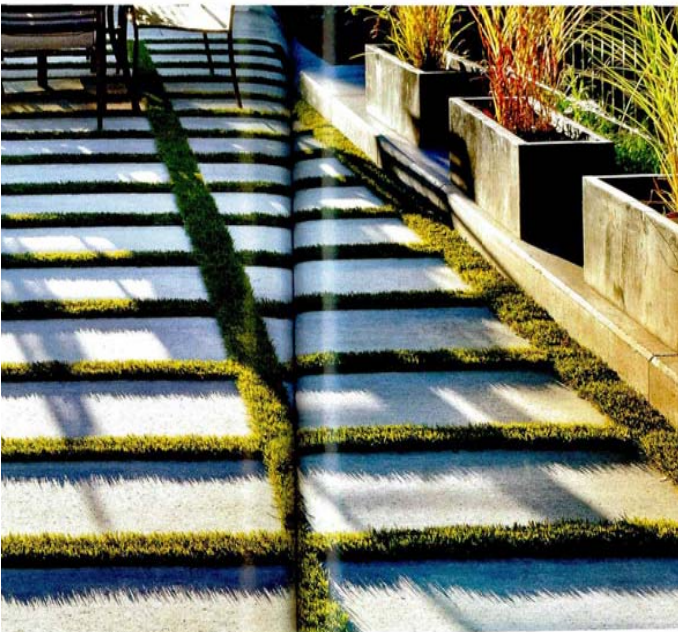
30" x 20"

57 x 762 = 506 (mm)
2 1/4 x 30 = 20 (in)

30" x 30" ✓

57 x 762 = 762 (mm)
2 1/4 x 30 = 30 (in)

ALL
TECHO BLOC



CONTEMPORARY: POLISHED

Blu 60 mm
SMOOTH

Blu 60 mm
POLISHED

Blu Granite

60 x 330 x 165 (mm)
2 1/4 x 13 x 6 1/2 (in)

60 x 330 x 330 (mm)
2 1/4 x 13 x 13 (in)

60 x 330 x 495 (mm)
2 1/4 x 13 x 19 1/2 (in)

1450 kg, 10.96 m² / pal. | 3196 lbs, 116.82 sq. ft. / pal.

60 x 330 x 165 (mm)
2 1/4 x 13 x 6 1/2 (in)

60 x 330 x 330 (mm)
2 1/4 x 13 x 13 (in)

60 x 330 x 495 (mm)
2 1/4 x 13 x 19 1/2 (in)

1417 kg, 10.96 m² / pal. | 3125 lbs, 116.82 sq. ft. / pal.

OR: MIXED SHADES

chestnut brown
oceana



BOREALIS

available spring 2014

BOREALIS

57 x 127 = 762 (mm)
2 1/4 x 5 = 30 (in)

65
HAZELNUT BRANDY

62
SAUVIGNON OAK

hazelnut bra



RÖCKA 48" & 60"

STEPS



48"
 152 x 381 x 371 = 1 219 (mm)
 6 x 15 = 14 1/4 = 48 (in)
 1 268 kg, 0.75 m lin. / pal.
 2 795 lbs, 32 lin. ft. / pal.



60"
 152 x 381 x 371 = 1 524 (mm)
 6 x 15 = 14 1/4 = 60 (in)
 632 kg, 4.57 m lin. / pal.
 1 394 lbs, 15 lin. ft. / pal.

Granite and other natural stone ingredients used in the manufacturing of the Stoneage Collection will produce colour/finish variations of 5-20%, similar to natural stone.