

ELEVATION NOTE:

ELEVATIONS ARE GEODETIC AND ARE DERIVED FROM BENCHMARK No. 00119202238 BEING A BOLT IN THE NORTHEAST WALL OF THE FORMER CUSTOM HOUSE, 0.3 METRES FROM THE EASTERLY CORNER AND IN SECOND COURSE OF STONEMWORK BELOW THE WATER TABLE. SAID BENCHMARK HAVING A VALUE OF 78.58 METRES CVD-1928-1978.

CAUTION:

THIS DRAWING WAS PREPARED FOR THE SOLE USE BY RMP CONSTRUCTION AND DEVELOPMENT LTD

NOTE:

AS PER THE CATARAQUI REGION CONSERVATION AUTHORITY THE STATIC FLOOD PLAIN IS 75.9 AND THE ADDITIONAL WAVE UPBUSH IS 0.5 METRES. THEREFORE THE CORRESPONDING REGULATORY FLOOD PLAIN ELEVATION IS 76.4 METRES GSC.

FOR BEARING COMPARISONS, A ROTATION OF 00°49'00" CLOCKWISE WAS APPLIED TO BEARINGS ON PLANS 28R-12743 AND 28R-11381

DISTANCES ARE GROUND AND CAN BE CONVERTED TO GRID BY MULTIPLYING BY THE COMBINED SCALE FACTOR OF 0.99969785

BEARINGS ARE UTM GRID, DERIVED FROM SIMULTANEOUS GPS OBSERVATIONS FROM ORP "A" TO ORP "B", UTM ZONE 18, (75° WEST LONGITUDE) NAD83 (ORIGINAL).

DISTANCES AND COORDINATES SHOWN ON THIS PLAN ARE IN METRES AND CAN BE CONVERTED TO FEET BY DIVIDING BY 0.3048

OBSERVED REFERENCE POINTS (ORPs) DERIVED FROM REAL TIME NETWORK (RTN) GPS OBSERVATIONS, UTM ZONE 18, NAD83 (ORIGINAL) COORDINATES TO URBAN ACCURACY PER SEC. 14 (2) OF O.R.C. 216/10

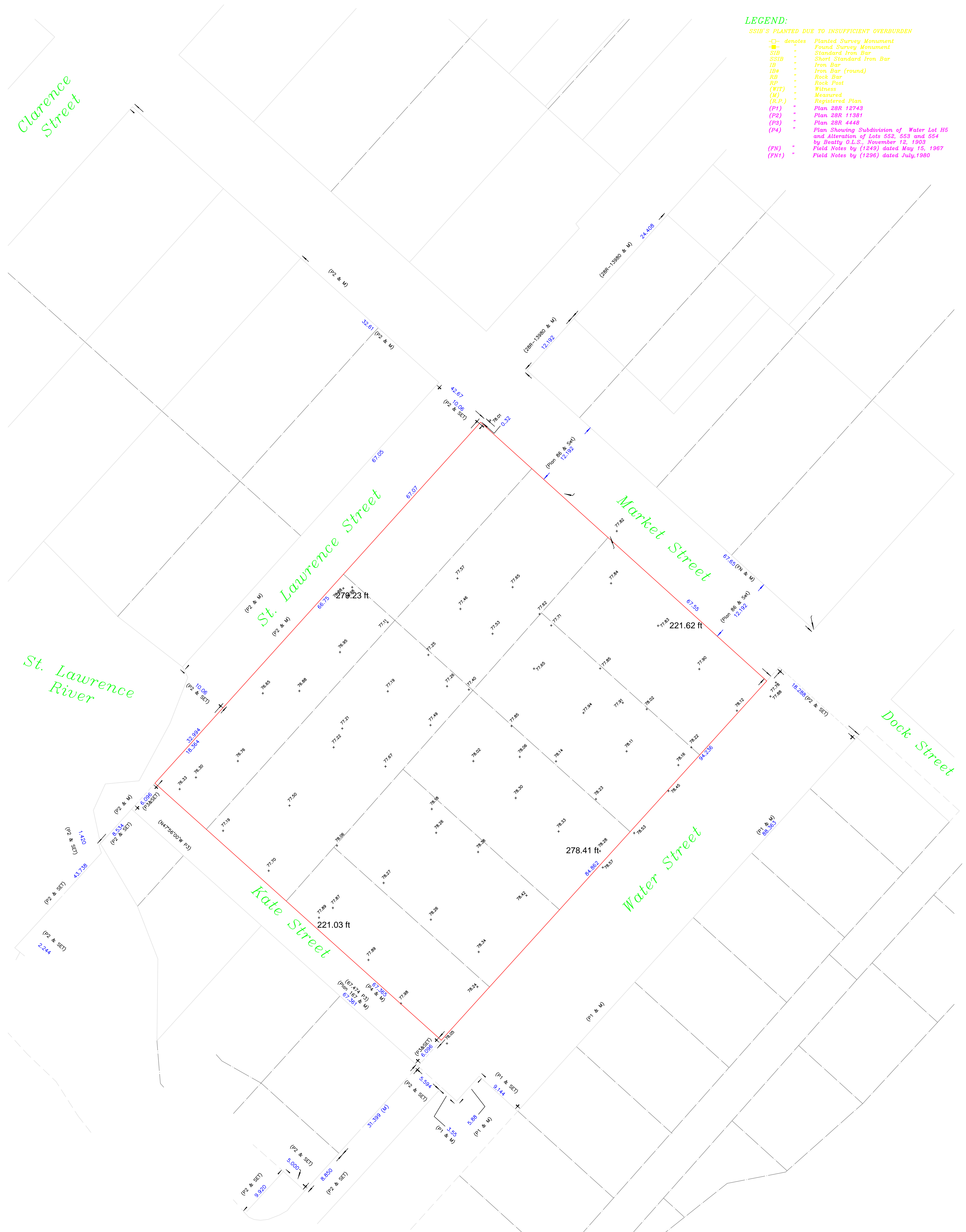
| POINT ID | NORTHING | EASTING |
|----------|------------|-----------|
| ORP "A" | 4908438.96 | 407293.63 |
| ORP "B" | 4908498.27 | 407359.72 |

COORDINATES CANNOT, IN THEMSELVES BE USED TO RE-ESTABLISH CORNERS OR BOUNDARIES SHOWN ON THIS PLAN.

LEGEND:

SSIB'S PLANTED DUE TO INSUFFICIENT OVERBURDEN

- | denotes Planted Survey Monument
- denotes Found Survey Monument
- SIB " Standard Iron Bar
- SSIB " Short Standard Iron Bar
- IB " Iron Bar
- IRB " Iron Bar (round)
- RB " Rock Bar
- RP " Rock Post
- (WIT) " Witness
- (M) " Measured
- (R.P.) " Registered Plan
- (P1) " Plan 28R 12743
- (P2) " Plan 28R 11381
- (P3) " Plan 28R 4448
- (P4) " Plan Showing Subdivision of Water Lot H5 and Alteration of Lots 552, 553 and 554 by Beatty O.L.S., November 12, 1903
- (FN) " Field Notes by (1249) dated May 15, 1967
- (FN1) " Field Notes by (1296) dated July, 1960



PLAN of SURVEY of
LOTS 546 TO 554, Inclusive
COMPILED PLAN NO. 86 (West)
Geographic Township of LEEDS
TOWN OF GANANOQUE

COUNTY of FRONTENAC
 SCALE = 1 : 300
 10metres 0 10 20metres

HOPKINS, CORMIER & CHITTY
 SURVEYING CONSULTANTS INC.
 -2012-



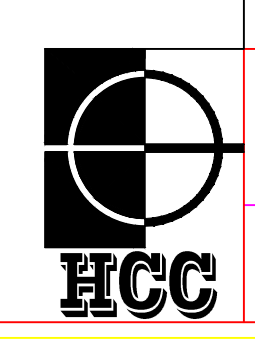
SURVEYOR'S CERTIFICATE:

I CERTIFY THAT:
 1. This Survey and Plan are correct and in accordance with the SURVEYS ACT, the SURVEYORS ACT and the REGULATIONS made under them.
 2. This Survey was completed on the _____ day of November, 2012.

HOPKINS, CORMIER & CHITTY SURVEYING

DATE: NOVEMBER 22, 2012

PHIL W. CHITTY, O.L.S.



| | | | |
|---|----------------|---|--------------|
| Party Chief: BK | Instrument: JD | Checked By: | Plan By: DTK |
| HOPKINS, CORMIER & CHITTY SURVEYING CONSULTANTS INC. Ontario Land Surveyors www.hopkinscormier.com | | | |
| 634-636 NORRIS COURT KINGSTON, ONTARIO K7P-2R9 Tel: (613) 384-9286 Fax: (613) 384-3513 | | PROJECT No. 2012-265 Lots 546-554, Plan 86 East Town of Gananoque | |