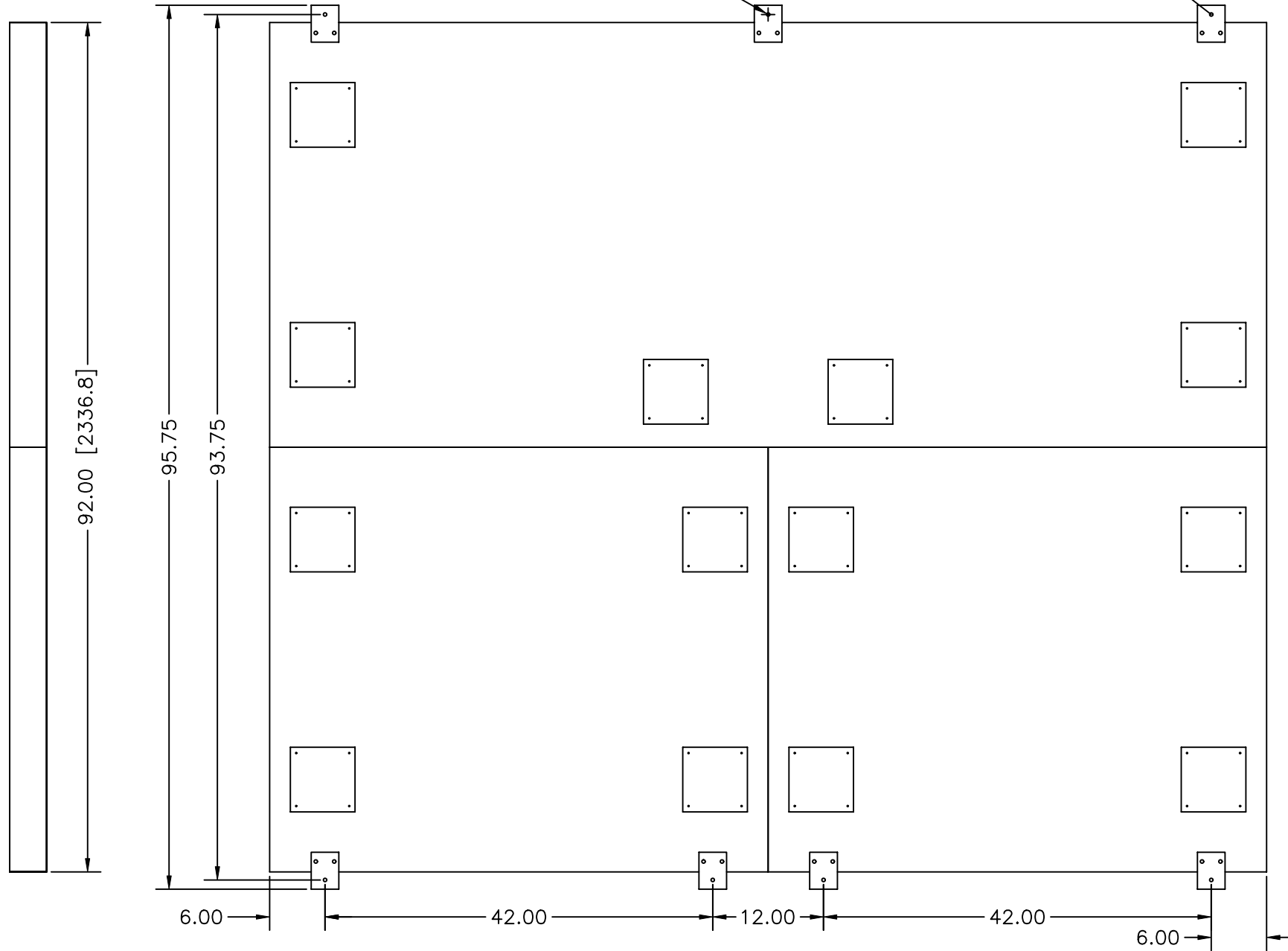
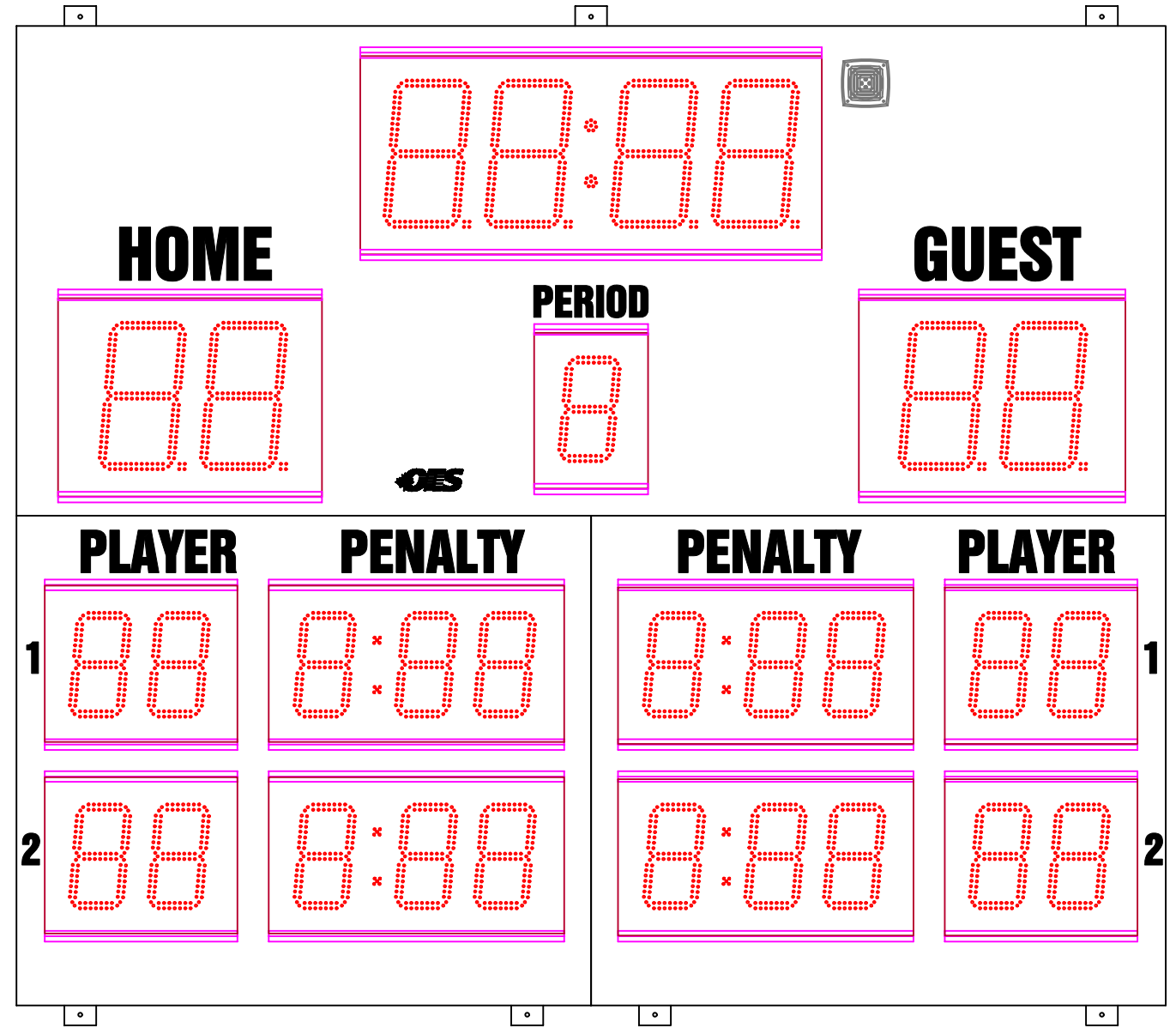
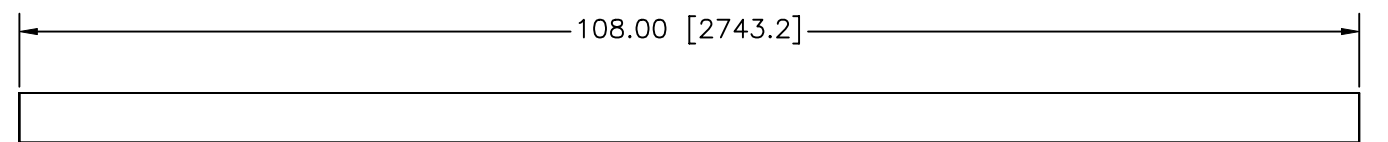
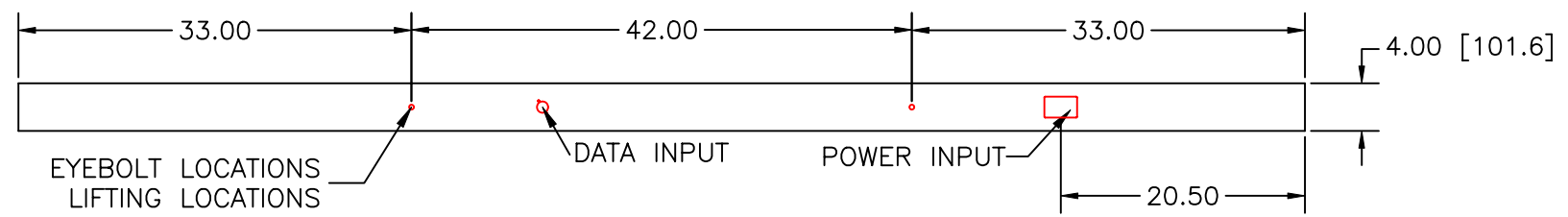


REVISION	DESCRIPTION	AUTH.	DATE	APVD
A	INITIAL DESIGN	RD	11/26/04	



SCOREBOARD SPECIFICATIONS:


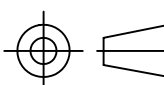
APPROX. WEIGHT: 230lbs (105kg)

VOLTAGE 110-120V 50-60Hz. 5AMP
220-230V 50-60Hz. 3AMP

OVERALL SIZE:
108in. W x 92in. H x 4in. DP
(2743.2mm W x 2336.8mm H x 101.6mm DP)

SCOREBOARD SPECIFICATIONS:

- 14" RED LED DIGITS (TIME, SCORE)
- 10" RED LED DIGITS (PERIOD, PENALTY TIME, PLAYER)
- w/ 5" WHITE VINYL LETTERING (HOME, GUEST)
- w/ 4" WHITE VINYL LETTERING (PENATLY, PLAYER)
- w/ 3" WHITE VINYL LETTERING (PERIOD)

APPROVED BY:		 4056 Blakie Road, London, ON, N6L 1P7 Tel: (519) 652-5833 Fax: (519) 652-3795 Email: oes@oes-inc.com	
CHECKED BY:			
NOTICE TO PERSON RECEIVING THIS DRAWING AND TECHNICAL INFORMATION: OES, INC. CLAIMS PROPERTY RIGHTS TO THE MATERIAL DISCLOSED HEREIN. THIS DRAWING INCLUDES UNPUBLISHED PROPRIETARY MATERIAL DEVELOPED BY OES, INC. AND AS SUCH IS NOT TO BE COPIED, REPRODUCED OR USED IN ANY WAY WITHOUT PRIOR WRITTEN AUTHORIZATION FROM OES, INC.		DESCRIPTION	
TOLERANCE INFORMATION Dimensions are in Inches Fractional ±1/16" Two Place Decimals ±0.02" Three Place Decimals ±0.005" Four Place Decimals ±0.0005" Angular ±30'		OES ELECTRONIC SCOREBOARD 6000 SERIES SCOREBOARDS 6200 SCOREBOARD INFORMATION	
THIRD ANGLE PROJECTIONS		SIZE	INIT DRAWING DATE
		B	11/26/04
		FILENAME: 6200-INFO USAGE: USE FOR REVIEW	
SCALE: NTS		DRAWN BY: RD	
		PAGE 1 OF 1	

110VAC LINE1 IN FROM OCT BOX
L1 N1 G

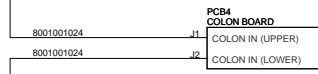
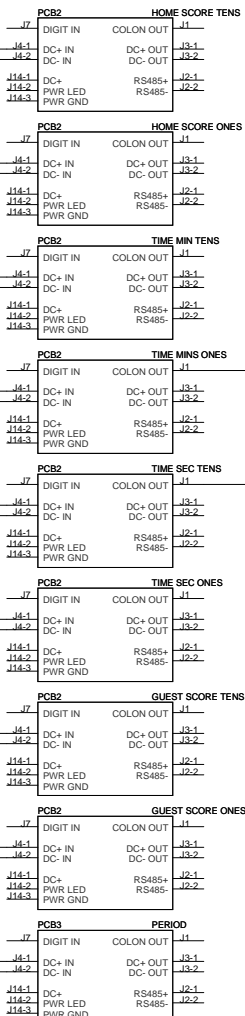
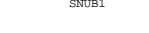
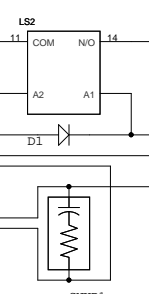
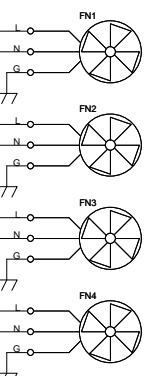
110VAC OUT TO PS2 AND PS3 LINE 1
L1 N1 G

MAX DRAW = 9.6 AMPS

PS1 POWER SUPPLY - MEANWELL 320W
LINE AC IN
NEUTRAL N
GROUND G
DC OUT

POWER SUPPLY FOR LED COLOR:
RED/YELLOW LED = 24VDC (XF413A)
WHITE/BLUE/GREEN LED = 36VDC (XF413J)

ALL POWER SUPPLIES LOCATED BEHIND TIME DIGITS

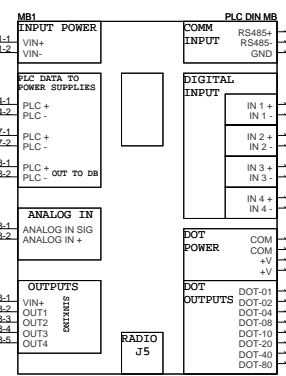


REVISION	DESCRIPTION	AUTH.	DATE	APVD
REL	RELEASE	DRH	20OCT17	
REL	MAKE COLORS GENERIC	DRH	23OCT17	

X-XX = DIGIT LED COLOR
RED LED = R-24
YELLOW LED = Y-24
WHITE LED = W-36
BLUE LED = B-36
GREEN LED = G-36

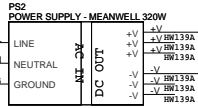
RS485 IN FROM OCT BOX
OPTIONAL WITH RADIO

DC IN FROM PS2 DC IN FROM PS3

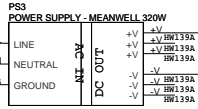


SW1	1	SWITCH - TOGGLE 20A 125V	WESTRIM	-	SW005C
SNUB1	1	SNUBBER	OES	-	SNUBBER
LS1	1	HORN	FEDERAL SIGNAL		HW162F
LS2	1	RELAY 5VDC	-	-	SW065B
D1	1	DIODE	-	-	DI007B
MB1	1	PLC DIN MOTHERBOARD	OES	DES0MMB1	
PCB2	8	14" DIGITS CREE LEDS X-COLOR	OES	BCF148X-XX	
PCB4	1	14" COLON CREE LEDS X-COLOR	OES	BCF14CXX	
PCB3	1	10" DIGITS CREE LEDS X-COLOR	OES	BCF10BXX	
PS1	1 or 0	POWER SUPPLY - 320W, 24V	-	-	XF413A
PS1	0 or 1	POWER SUPPLY - 320W, 36V	-	-	XF413J
FN1-4	4	FAN	-	-	HW728A
TB2	3	DIN TERMINAL BLOCK - WHITE	-	-	CN534A
TB1	3	DIN TERMINAL BLOCK - BLACK	-	-	CN536A
CB1	1	DIN CIRCUIT BREAKER - 15A	-	-	CN534P
ITEM	QTY	DESCRIPTION	MFG	PART #	BIN
Title			M6200XVXX - COMM PLC		
Size			Document Number M6200XVXX.dsn		
C			Rev ..		
Date:			Monday, October 23, 2017		
Sheet			1 of 2		

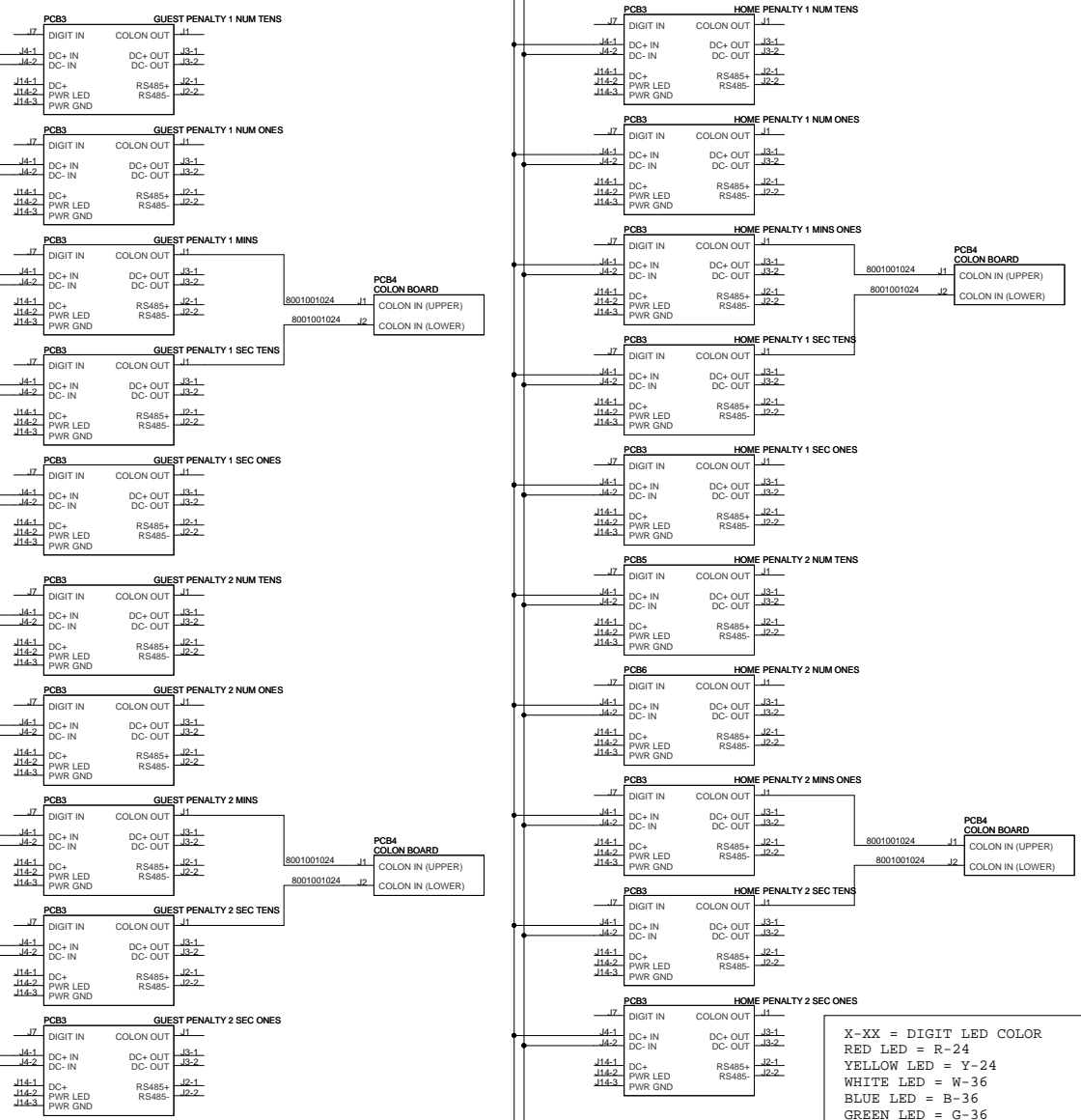
110VAC IN
FROM LINE 1
L N G



ALL POWER SUPPLIES
LOCATED BEHIND
TIME DIGITS



POWER SUPPLY FOR LED COLOR:
RED/YELLOW LED = 24VDC (XF413A)
WHITE/BLUE/GREEN LED = 36VDC (XF413J)



REVISION	DESCRIPTION	AUTH.	DATE	APVD
REL	RELEASE	DRH	20OCT17	
REL	MAKE COLORS GENERIC	DRH	23OCT17	

X-XX = DIGIT LED COLOR
RED LED = R-24
YELLOW LED = Y-24
WHITE LED = W-36
BLUE LED = B-36
GREEN LED = G-36

PCB3	20	10" DIGITS CREE LEDS X = COLOR	OES	ICF106X-XX	-
PCB4	4	10" COLON CREE LEDS X = COLOR	OES	ICF10CX-XX	-
PS2-3	2 or 0	POWER SUPPLY - 320W, 24V	-	-	XF413A
PS2-3	0 or 2	POWER SUPPLY - 320W, 36V	-	-	XF413J
ITEM	QTY	DESCRIPTION	MFG	PART #	BIN
			OES, INC 4056 BLAIE RD LONDON, ONTARIO N6L 1P7		
Title: M6200XVXX - COMM PLC					
Size	C Document Number M6200XVXX.dsn				Rev
Date: Monday, October 23, 2017 Sheet 2 of 2					

DC OUT
TO MB

DC OUT
TO MB