

## NOTICE OF MEETING

### Proposed Class III Community Planning Permit

TAKE NOTICE THAT the Planning Advisory Committee/Committee of Adjustment for the Town of Gananoque will hold a Meeting on **TUESDAY, SEPTEMBER 25<sup>TH</sup>, 2018 at 6:00 P.M.** in the **TOWN OF GANANOQUE EMERGENCY SERVICES BUILDING, 340 Herbert Street, Gananoque** to provide a recommendation to Council on the application below.

**AND FURTHER TAKE NOTICE** that the Council for the Corporation of the Town of Gananoque will hold a Public Meeting on **TUESDAY, OCTOBER 2<sup>ND</sup>, 2018 at 6:00 P.M.** at the **TOWN OF GANANOQUE EMERGENCY SERVICES BUILDING, 340 Herbert Street, Gananoque** to hear the following application to consider a Class III Community Planning Permit:

File No. CPPS2018-11

**OWNER:** Roger Cauley (Catholic District School Board of Eastern Ontario)

**APPLICANT:** Art Williamson

The property municipally and legally described as

**235 Georgiana Street**

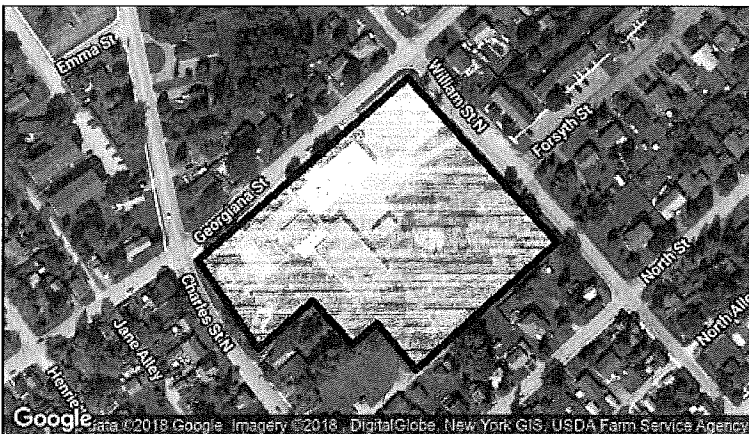
PLAN 86 LOTS 792 TP 797 LOTS 781 TO 783 LOTS 800 TO 813 AND  
RP 28R12000 PART 1 AND RP 28R10678 PART 3  
TOWN OF GANANOQUE

has applied to the Town of Gananoque for a Community Planning Permit to  
**CONSTRUCT AN ADDITION TO ACCOMMODATE A DAYCARE FACILITY**

Additional information in relation to the proposed development permit is available for inspection between 8:30 am and 4:30 pm in the Administration Offices at 30 King Street East, Gananoque, ON, or by calling 613 382-2149 ext. 1126.

If you wish to provide comment or input you may do so at the public meeting or in writing prior to the meeting.

**Note:** Only the applicant of a development permit has a right to appeal a decision or non-decision on an application to the LPAT where the application meets the requirements established through the official plan and development permit bylaw.



DATED this 10<sup>th</sup> day **SEPTEMBER, 2018**

Brenda Guy  
Manager of Community Development  
bguy@gananoque.ca  
613 382-2149 Ext. 1126

MUNICIPAL ADDRESS

SITE DATA

ZONING

235 GEORGIANA ST  
CAMAGUANA ST  
ONTARIO  
L2C 1A6

DATE: 10/15/13  
DRAWN BY: [Name]  
CHECKED BY: [Name]  
SCALE: 1/8" = 1'-0"

UNIVERSITY OF  
TORONTO  
SCHOOL OF ARCHITECTURE  
128 SPADINA AVENUE  
TORONTO, ONTARIO  
M5S 1A5

UNIVERSITY OF  
TORONTO  
SCHOOL OF ARCHITECTURE  
128 SPADINA AVENUE  
TORONTO, ONTARIO  
M5S 1A5



**PARKING CALCULATIONS**

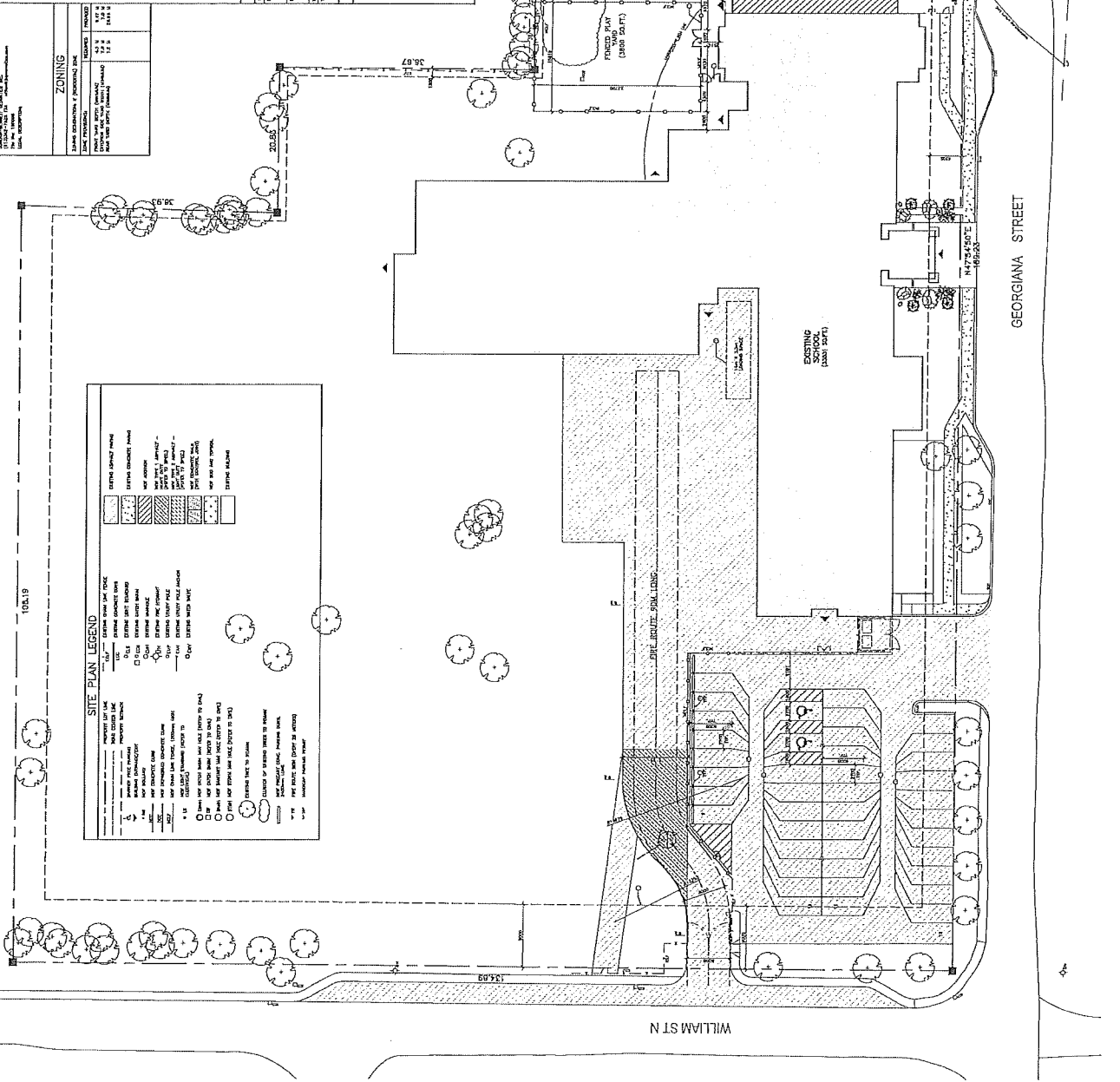
TYPE OF USE	MINIMUM PARKING PER SPACE	PROPOSED # OF SPACES
RESIDENTIAL	1.0	12
COMMERCIAL	1.0	12
OFFICE	1.0	12
TOTAL		36

**SITE PLAN NOTES**

1. ALL DIMENSIONS ARE IN METERS UNLESS OTHERWISE SPECIFIED.
2. ALL DIMENSIONS ARE TO FACE UNLESS OTHERWISE SPECIFIED.
3. ALL DIMENSIONS ARE TO CENTERLINE UNLESS OTHERWISE SPECIFIED.
4. ALL DIMENSIONS ARE TO CENTERLINE UNLESS OTHERWISE SPECIFIED.
5. ALL DIMENSIONS ARE TO CENTERLINE UNLESS OTHERWISE SPECIFIED.
6. ALL DIMENSIONS ARE TO CENTERLINE UNLESS OTHERWISE SPECIFIED.
7. ALL DIMENSIONS ARE TO CENTERLINE UNLESS OTHERWISE SPECIFIED.
8. ALL DIMENSIONS ARE TO CENTERLINE UNLESS OTHERWISE SPECIFIED.
9. ALL DIMENSIONS ARE TO CENTERLINE UNLESS OTHERWISE SPECIFIED.
10. ALL DIMENSIONS ARE TO CENTERLINE UNLESS OTHERWISE SPECIFIED.

**GENERAL NOTES**

1. ALL DIMENSIONS ARE TO FACE UNLESS OTHERWISE SPECIFIED.
2. ALL DIMENSIONS ARE TO FACE UNLESS OTHERWISE SPECIFIED.
3. ALL DIMENSIONS ARE TO FACE UNLESS OTHERWISE SPECIFIED.
4. ALL DIMENSIONS ARE TO FACE UNLESS OTHERWISE SPECIFIED.
5. ALL DIMENSIONS ARE TO FACE UNLESS OTHERWISE SPECIFIED.
6. ALL DIMENSIONS ARE TO FACE UNLESS OTHERWISE SPECIFIED.
7. ALL DIMENSIONS ARE TO FACE UNLESS OTHERWISE SPECIFIED.
8. ALL DIMENSIONS ARE TO FACE UNLESS OTHERWISE SPECIFIED.
9. ALL DIMENSIONS ARE TO FACE UNLESS OTHERWISE SPECIFIED.
10. ALL DIMENSIONS ARE TO FACE UNLESS OTHERWISE SPECIFIED.



**EDWARD J. CUHACI & ASSOCIATES ARCHITECTS INC.**  
 25 BAYVIEW AVE. SUITE 200  
 SCARBOROUGH, ONTARIO M1S 5V6  
 TEL: (416) 291-1111  
 FAX: (416) 291-1112  
 WWW.EJCA.COM

**EDWARD J. CUHACI & ASSOCIATES ARCHITECTS INC.**  
 25 BAYVIEW AVE. SUITE 200  
 SCARBOROUGH, ONTARIO M1S 5V6  
 TEL: (416) 291-1111  
 FAX: (416) 291-1112  
 WWW.EJCA.COM

**EDWARD J. CUHACI & ASSOCIATES ARCHITECTS INC.**  
 25 BAYVIEW AVE. SUITE 200  
 SCARBOROUGH, ONTARIO M1S 5V6  
 TEL: (416) 291-1111  
 FAX: (416) 291-1112  
 WWW.EJCA.COM

**EDWARD J. CUHACI & ASSOCIATES ARCHITECTS INC.**  
 25 BAYVIEW AVE. SUITE 200  
 SCARBOROUGH, ONTARIO M1S 5V6  
 TEL: (416) 291-1111  
 FAX: (416) 291-1112  
 WWW.EJCA.COM

**EDWARD J. CUHACI & ASSOCIATES ARCHITECTS INC.**  
 25 BAYVIEW AVE. SUITE 200  
 SCARBOROUGH, ONTARIO M1S 5V6  
 TEL: (416) 291-1111  
 FAX: (416) 291-1112  
 WWW.EJCA.COM

**A001**

DATE: 10/15/13  
 DRAWN BY: [Name]  
 CHECKED BY: [Name]  
 SCALE: 1/8" = 1'-0"

**SITE PLAN**  
 1/8" = 1'-0"